



THE 100+

Yo<sup>2</sup>

RUGS

**Yo<sup>2</sup>**

[www.yo2.io](http://www.yo2.io)



THEME CATEGORIES

VINTAGE	10 -23
ILLUSIONS	24 -31
ART	32 -53
NATURE	54 -65
DIGITAL ART	66 -77
COLLAGE	78 -89
CRAFT	90 -99
SPLASHES	100 -107
SHADES	108 -115
CONTEMPORARY	116 -129
LINES	130 -143
DECORATIVE	144 -155
VIVID	156 -171
GEOMETRIC	172 -181
POP CLASSIC	182 -197

---

## OUR PHILOSOPHY

YO2 is a pioneering design brand that provides design solutions for their international clientele. YO2 design philosophy is to enrich their clients' homes and working space with beautiful creations that both respect culture and bring a twist of classical influence. Each collection has been designed with the client at the forefront of our minds, and each product can be customized by our designer team. Each collection and each individual design have a story to tell. Evident throughout our designs is a clear crossover between technical, intellectual and creative skills that result in harmonious, eye-catching products that are unique but at the same time an ode to the past. Whilst a common theme of modern Baroque can be found within many of our designs, an overall marriage of classical influence and contemporary conceptualisation are present. One of the most important initiatives of YO2 is to provide a truly wide range of design solutions for professionals and individuals alike; A one stop hub for professionals that search ideas and suggestions for both walls and floors. Our wish is to present a multidimensional design approach, allowing professionals as well as our individual clients to have the choice of an exclusive but at the same time wide range of design ideas pool.

## DESIGNERS

Beyond the highly creative YO2 inhouse design team, we are very proud to work with some of the most established and highly talented designers of the world's design scene. This enables us to bring some powerful design ideas to life: Different cultural backgrounds through highly creative approaches as a result of their unique charisma become part of an exquisite range of products by YO2. Such acclaimed associates contribute with their creations which are so much more than just design proposals; each one tells a beautiful story adding the human touch our company is committed to bring to the relationship with our clientele.

## CLIENTS

We take pride in working with the leading architectural offices, real estate companies, constructors, hoteliers and designers around the world. YO2 products are distributed through a network of excellent design-oriented shops and agencies in the most countries. Our creative team can adjust or customize any YO2 product from our range to fit the requirements of any project as all of our materials are manufactured mainly for the commercial projects sector, possessing the highest certifications of heavy commercial use norms.

## RUGS & BROADLOOMS

YO2 offers an array of elegant, luxurious rugs and broadlooms. Our rug designs combine advanced colour technologies and high-quality materials to create durable, dazzling patterns. These products are available in light and dark colours, geometric and floral prints, and in a variety of neo-classical styles. A certified product for heavy commercial use and recommended for areas with heavy traffic as well as residential use. Fantastic color and print quality, with an excellent feel and high sound absorption. Beautiful rugs combine highly qualitative material and color technology. What defines our rugs production is the use of the pioneer printing concept which allows creativity to be combined with process color technology for extreme clarity, speed and also the ability of offering different qualities.

---

# VINTAGE



Colour Variations: P200







Colour Variations: P200







AT3.03.1 

---



Colour Variations: P200







Colour Variations: P201







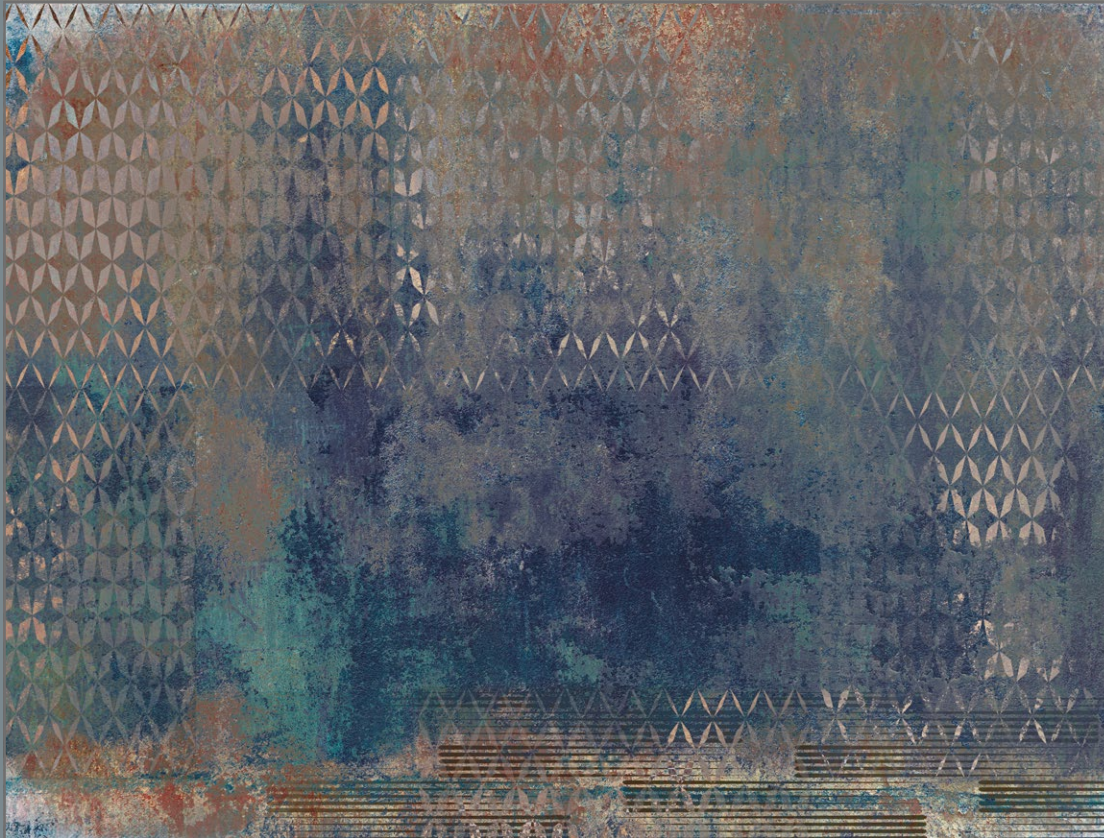
Colour Variations: P201





AT3.01.3 

---



Colour Variations: P202









Colour Variations: P202

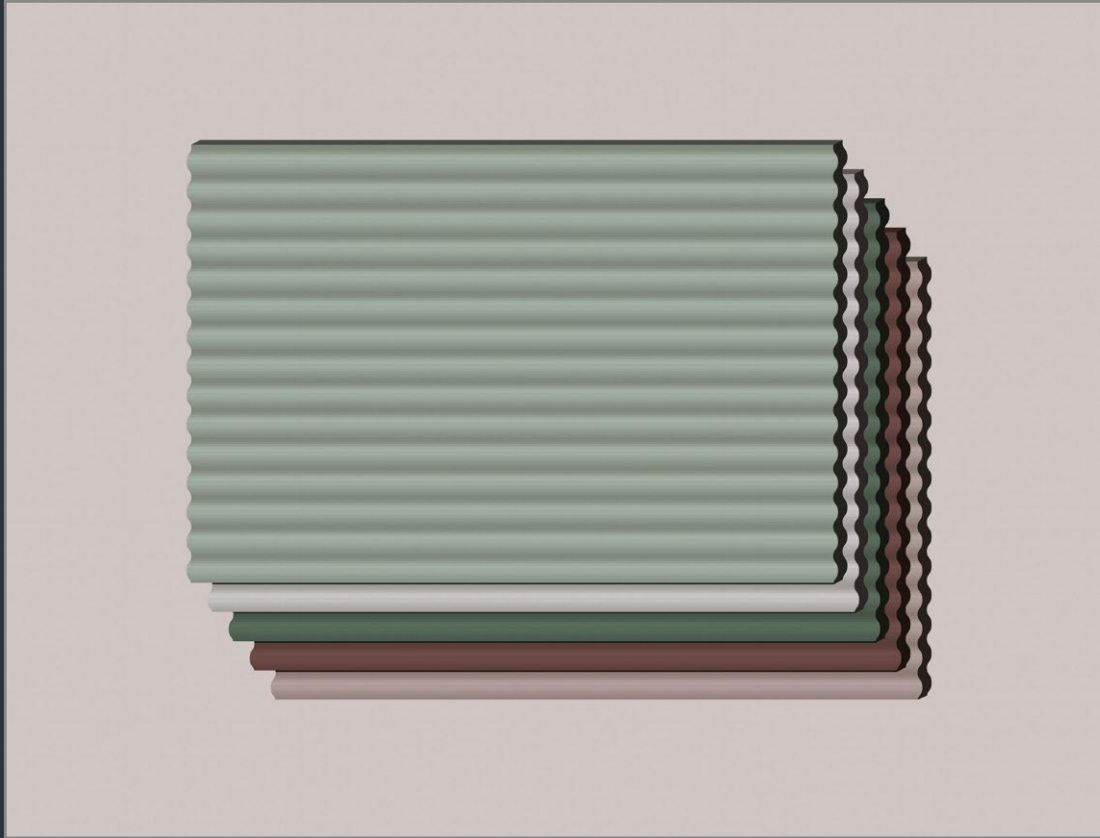


SL3.03.1 

---

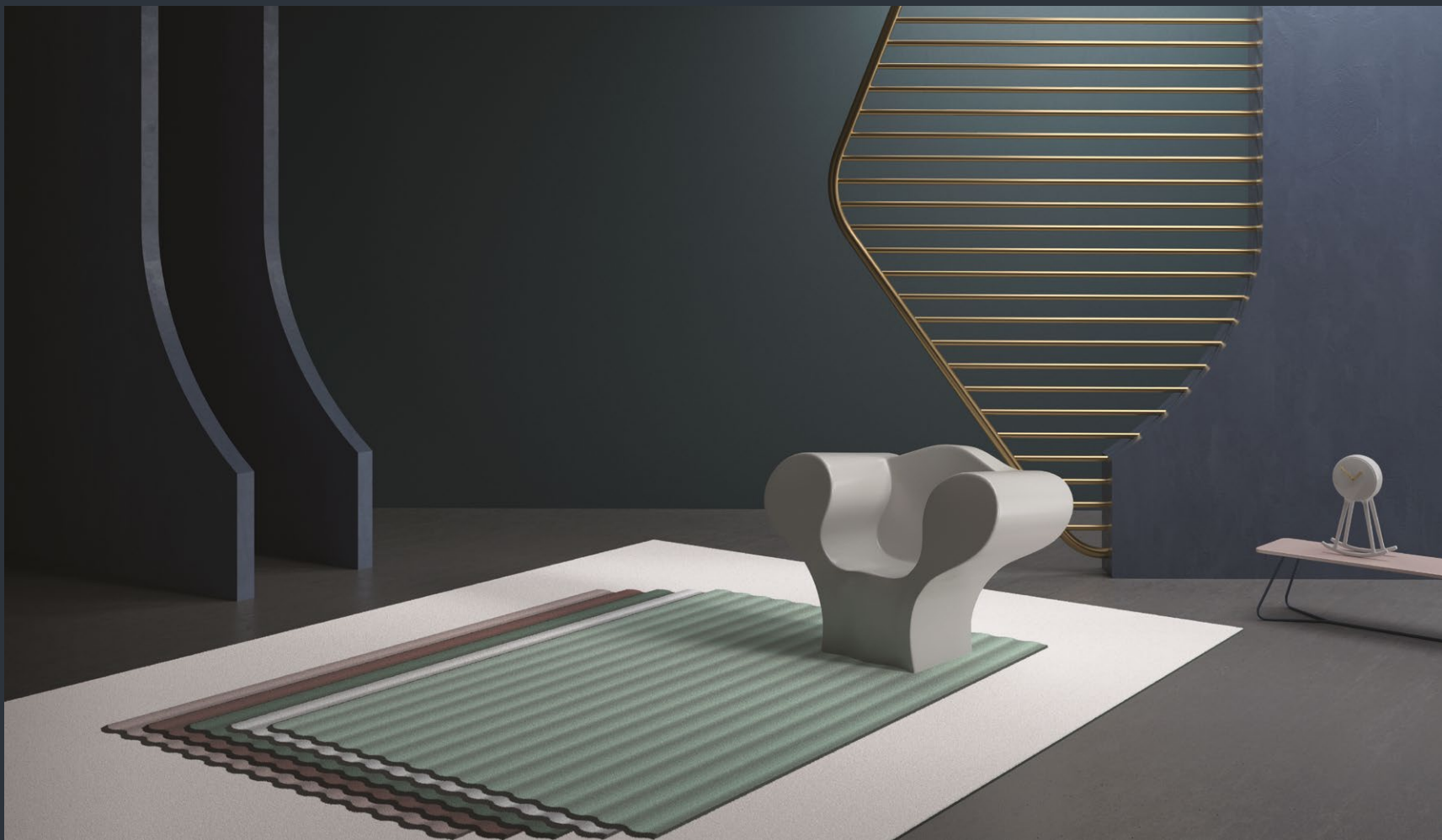
---

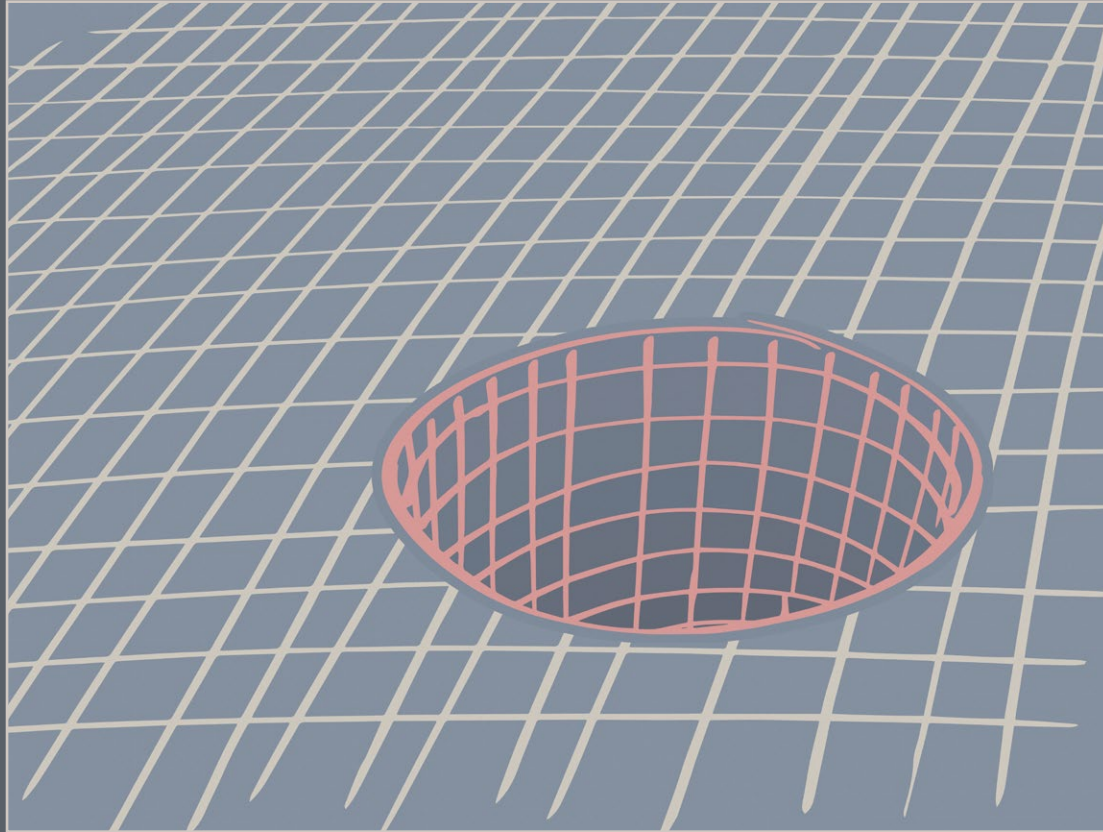
# ILLUSIONS



Colour Variations: P203

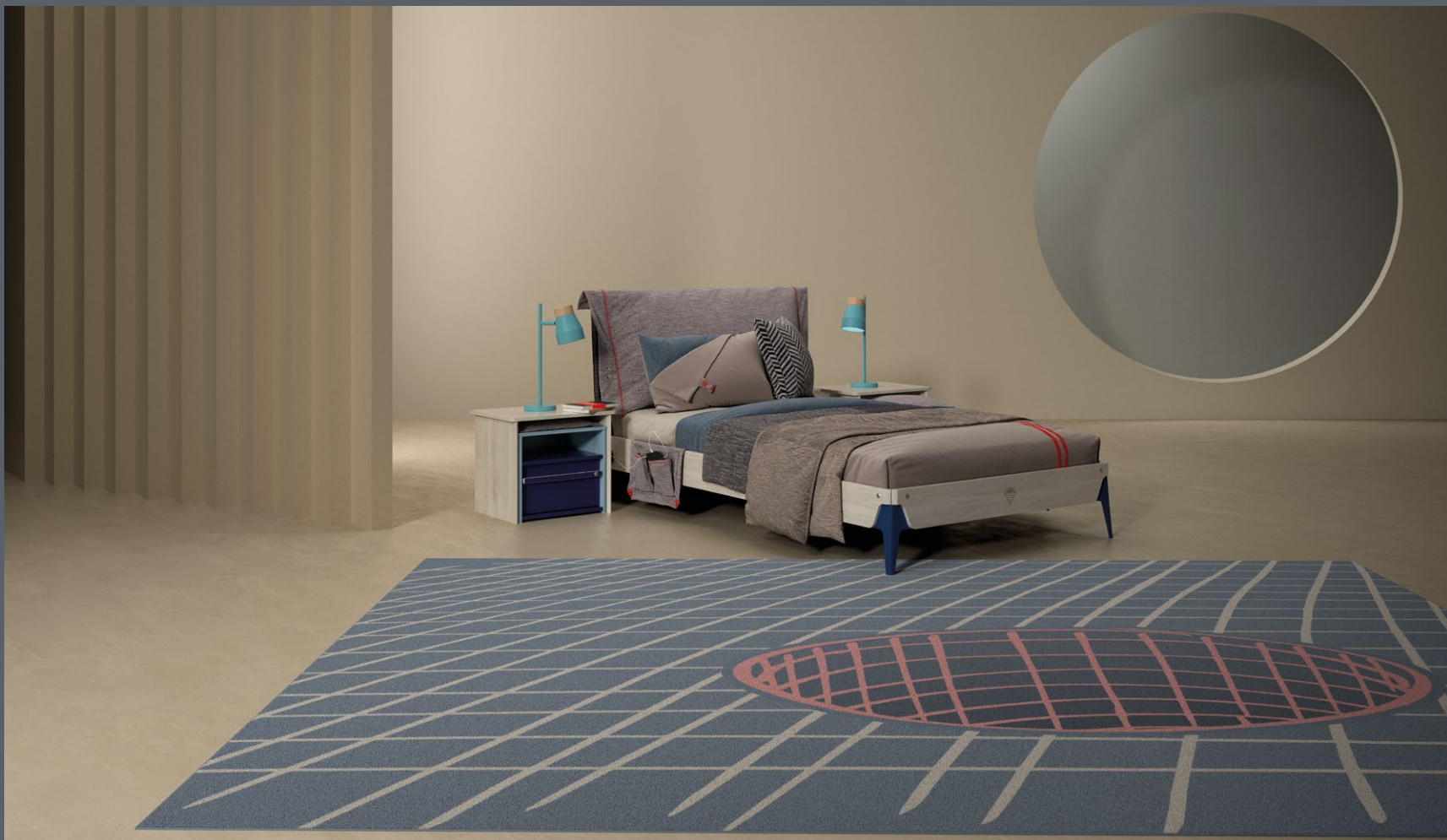






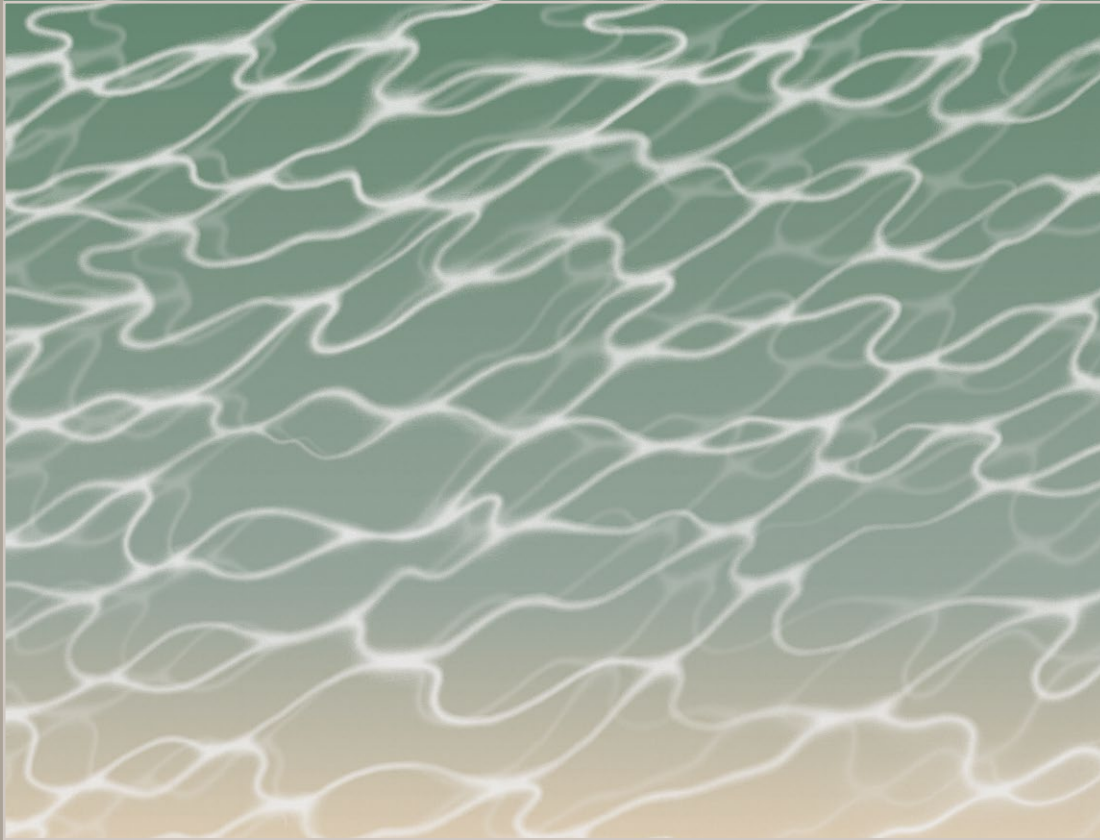
Colour Variations: P203





HO3.01.2 

---



Colour Variations: P203

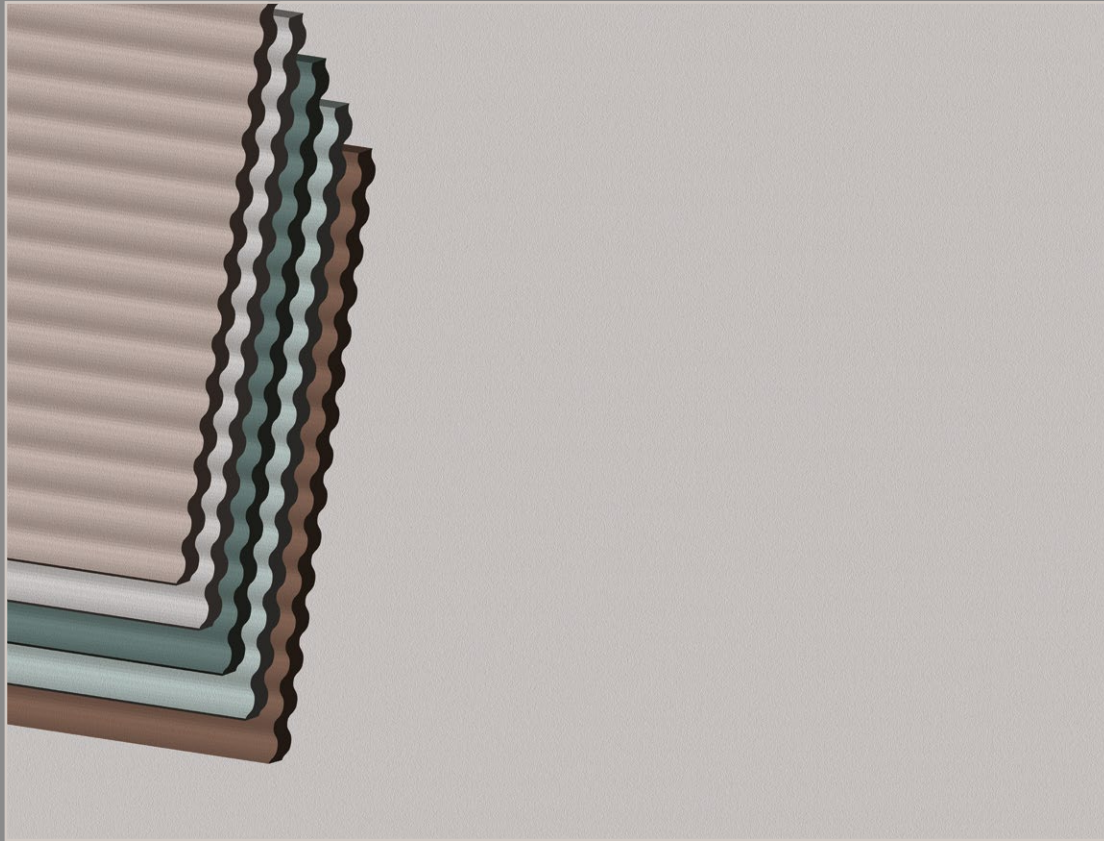






AB3.01.1 

---



Colour Variations: P204





---

ART



Colour Variations: P204





WV3.01.1 

---



Colour Variations: P204





MO3.01.1



Colour Variations: P204







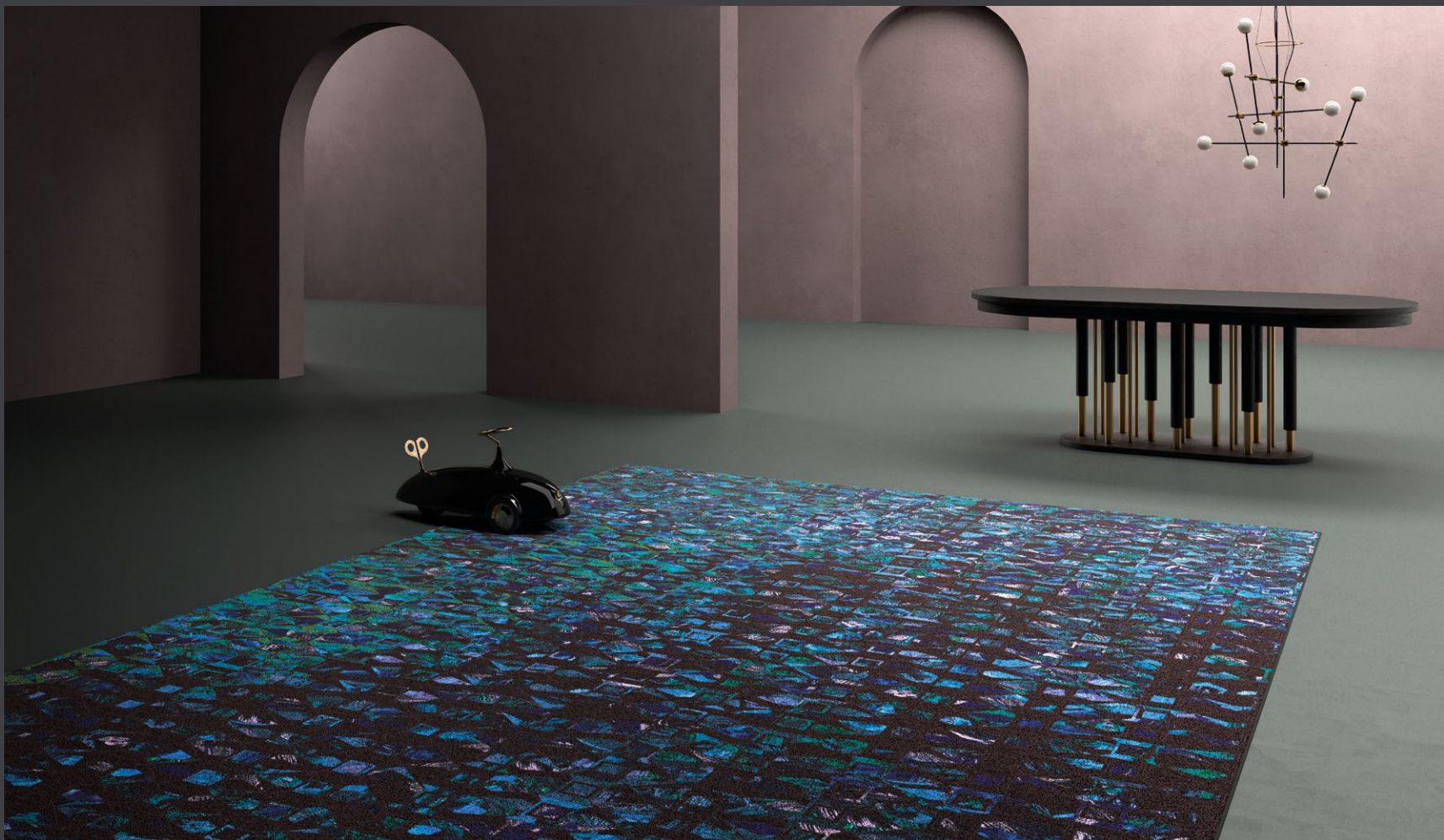
OO3.01.1 

---



Colour Variations: P205







Colour Variations: P205





PT3.01.1 —————



Colour Variations: P205





TR3.01.1 

---



Colour Variations: P205









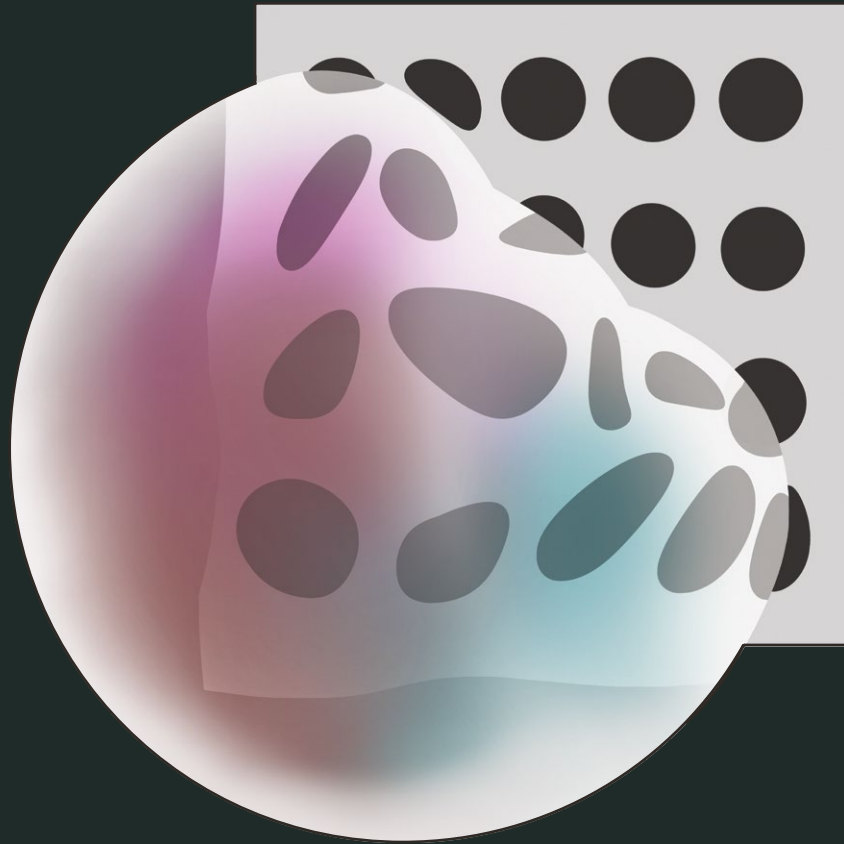
Colour Variations: P206





UD3.01.2 

---



Colour Variations: P206





SU3.01 

---



Colour Variations: P206





AC3.01.1 

---



Colour Variations: P206







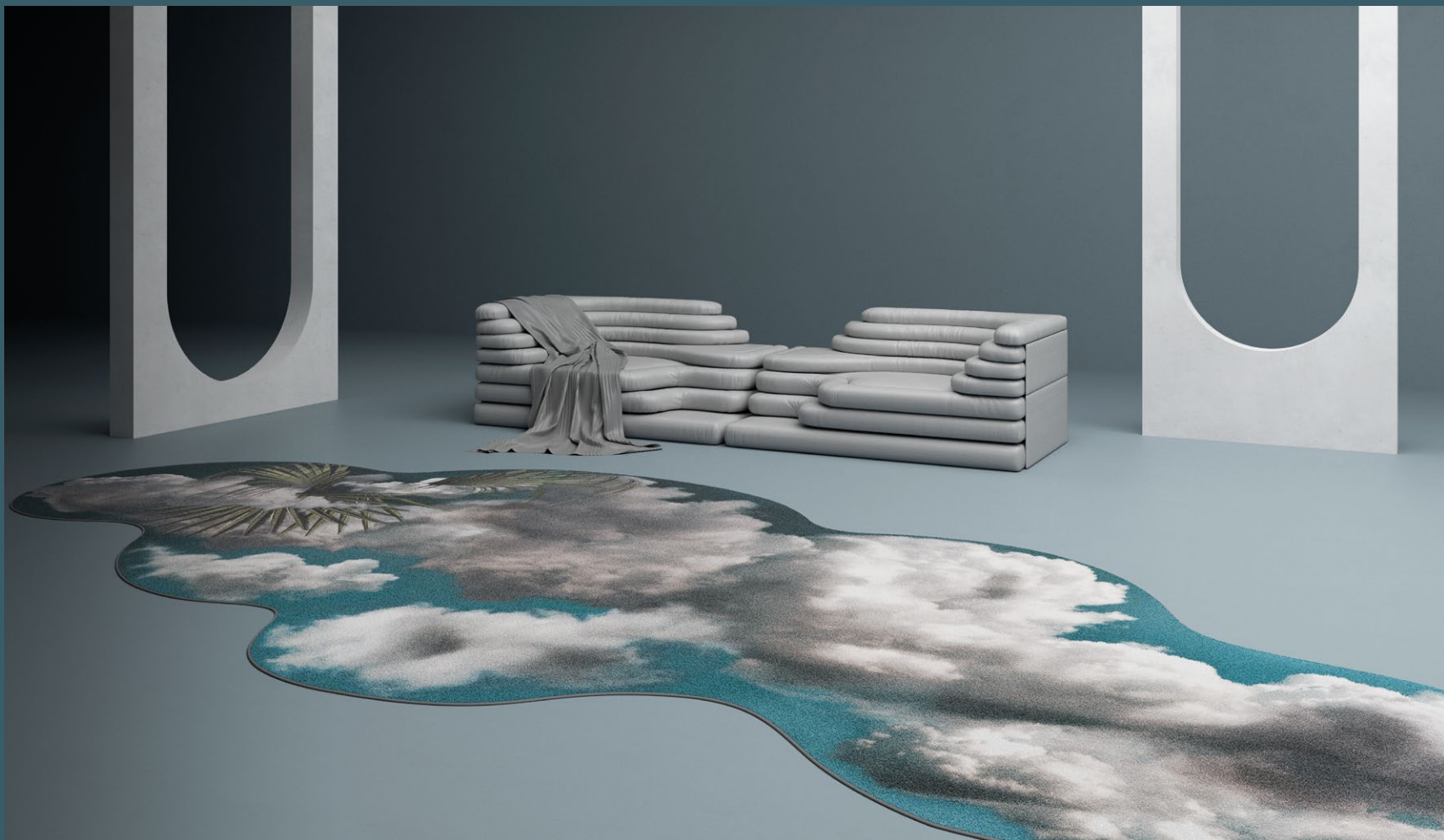
---

# NATURE



Colour Variations: P207





HG3.01.1 

---

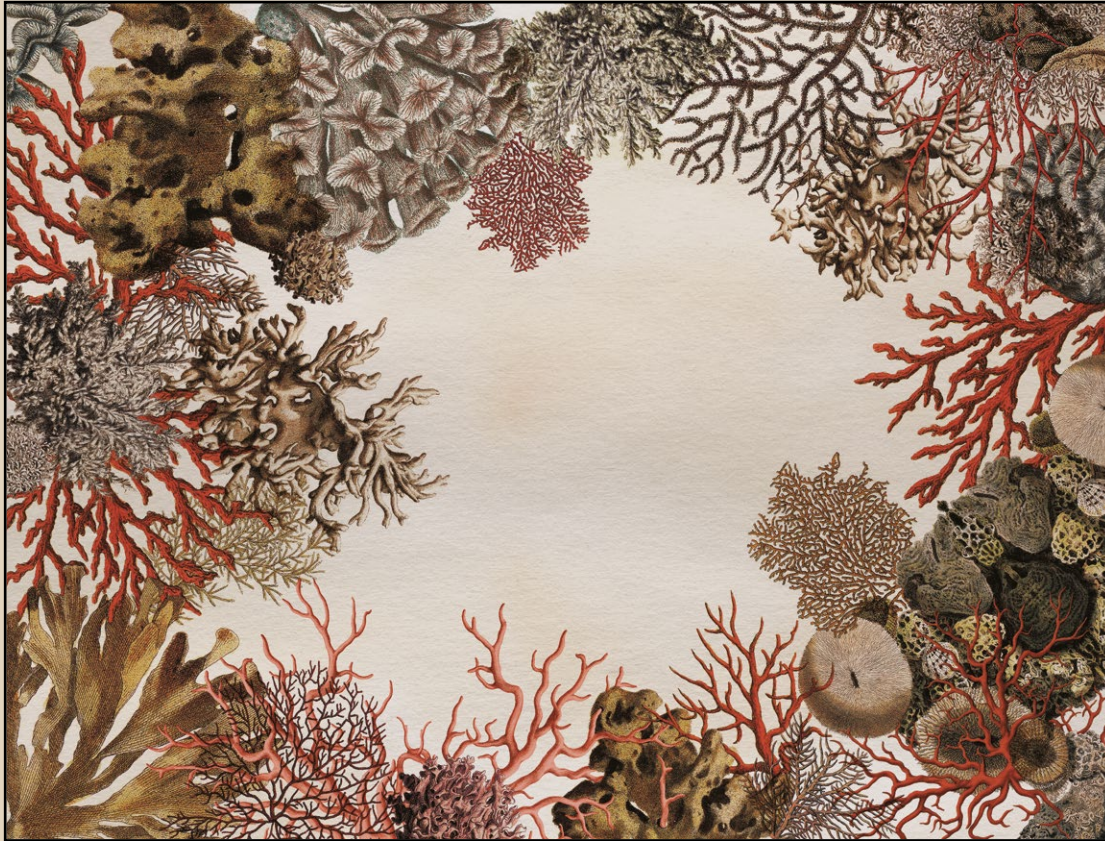


Colour Variations: P207



AG3.01.1 

---



Colour Variations: P207



CL3.01.3 

---



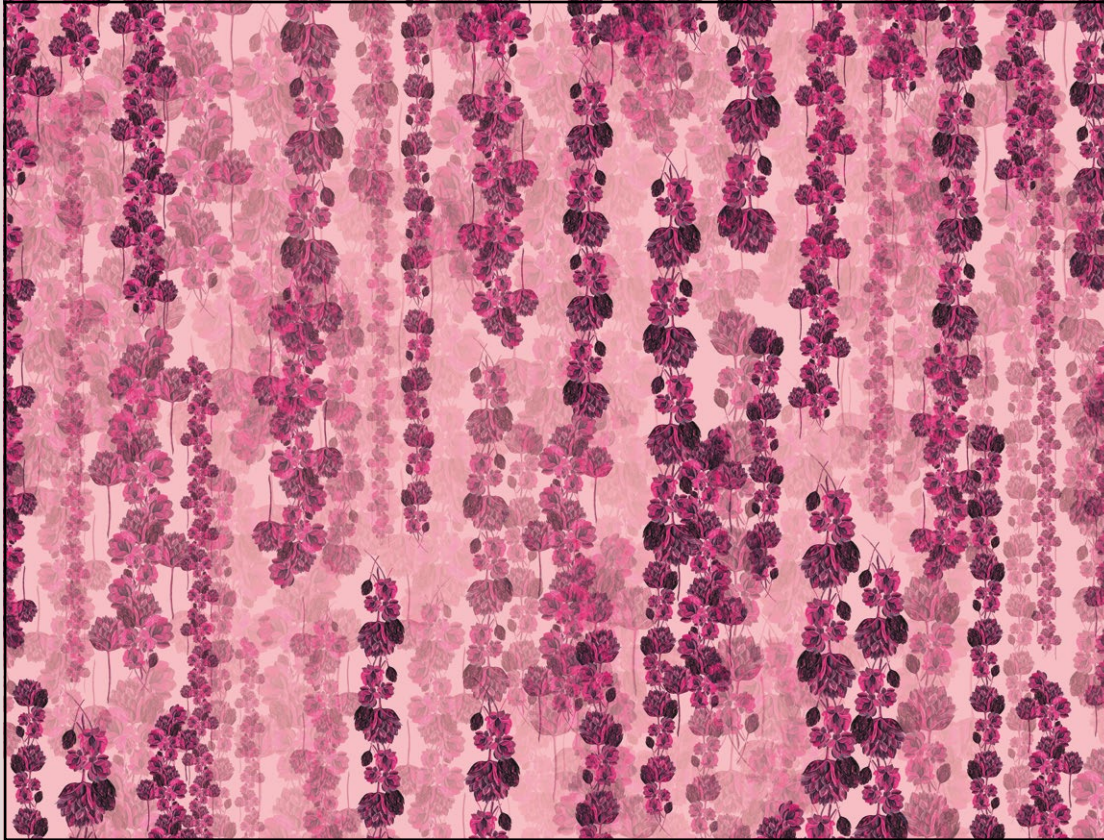
Colour Variations: P208







AR3.01.1



Colour Variations: P208





NB3.01.2 

---



Colour Variations: P208



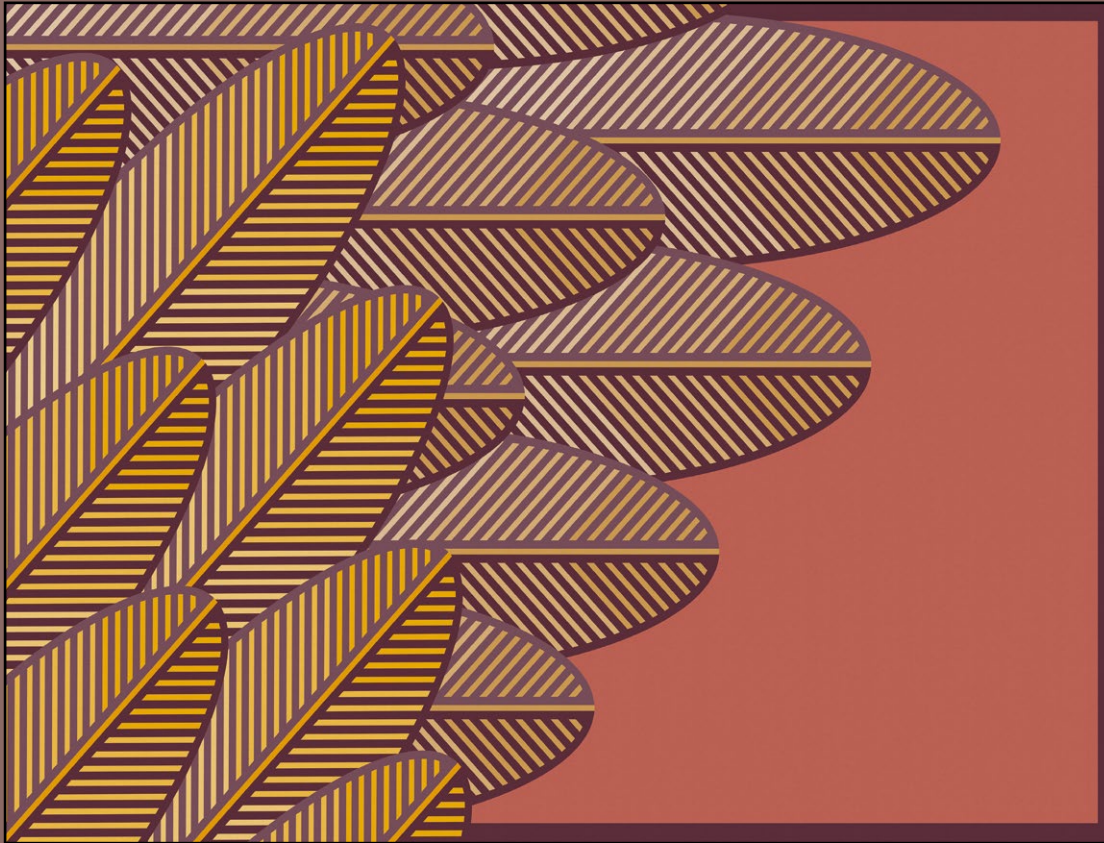


TF3.01.3 

---

---

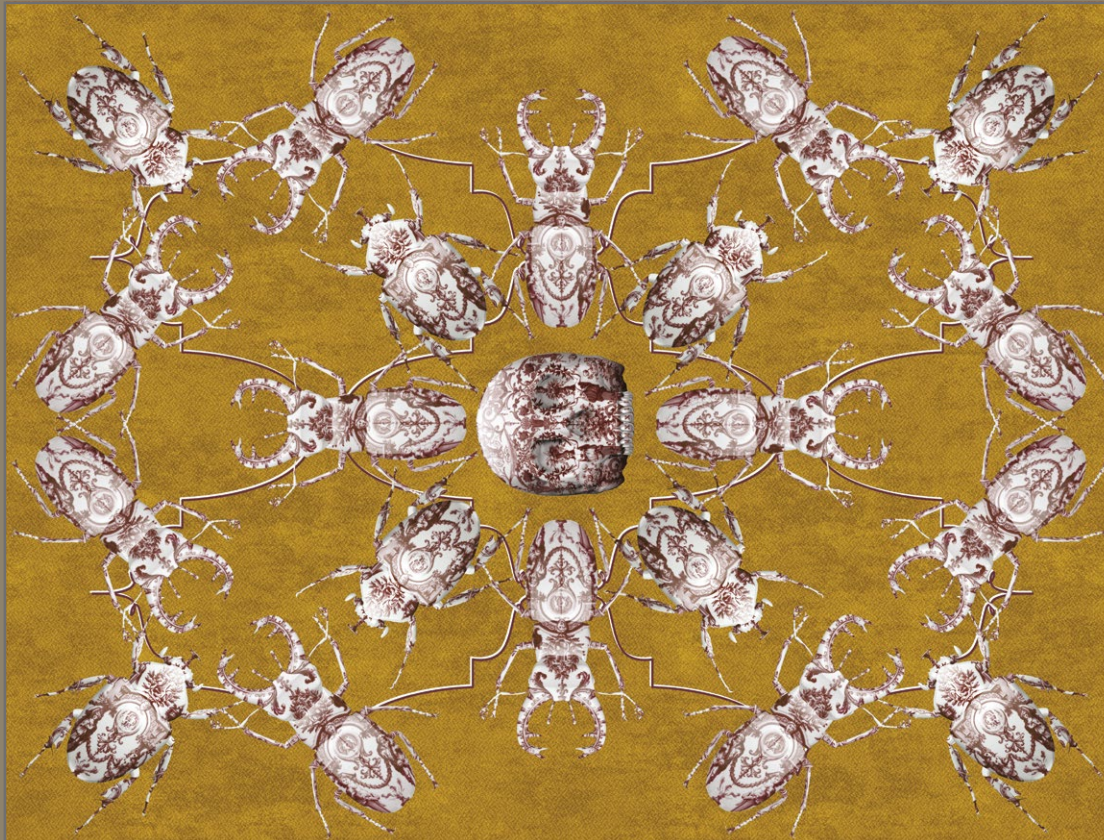
# DIGITAL ART



Colour Variations: P209







Colour Variations: P209

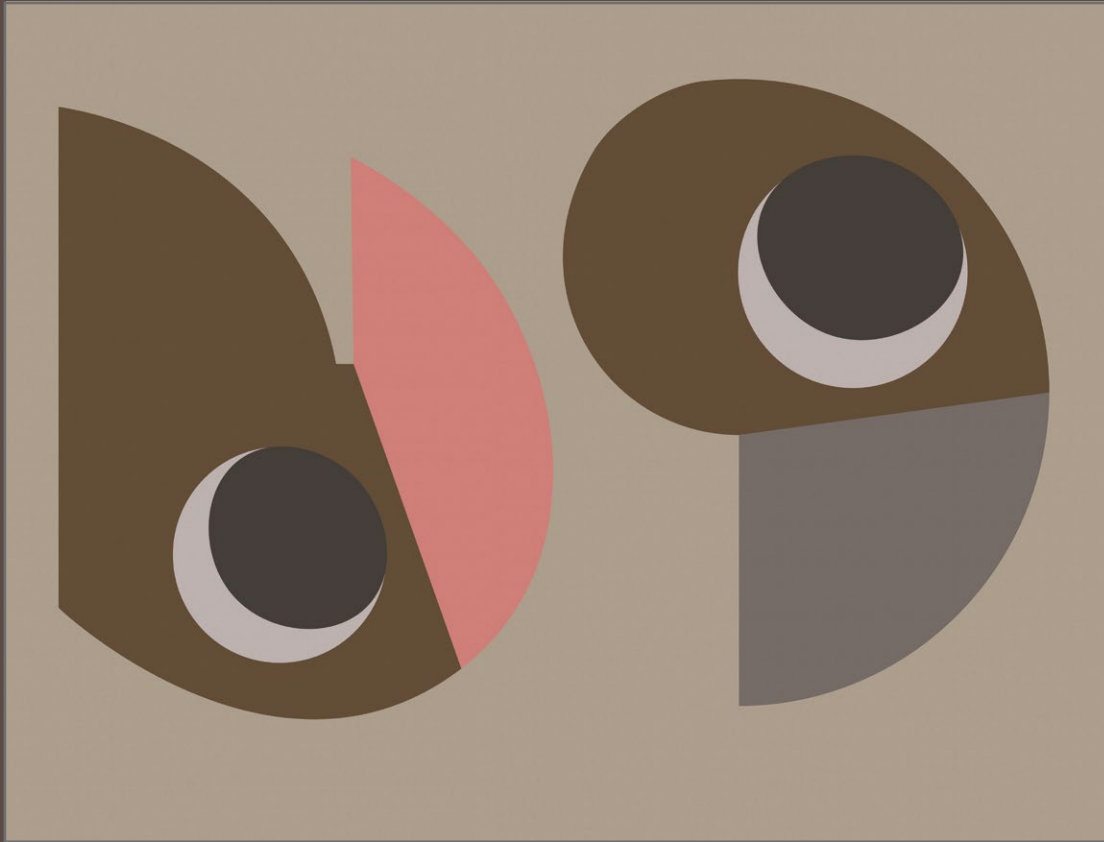






KS3.01.3 

---



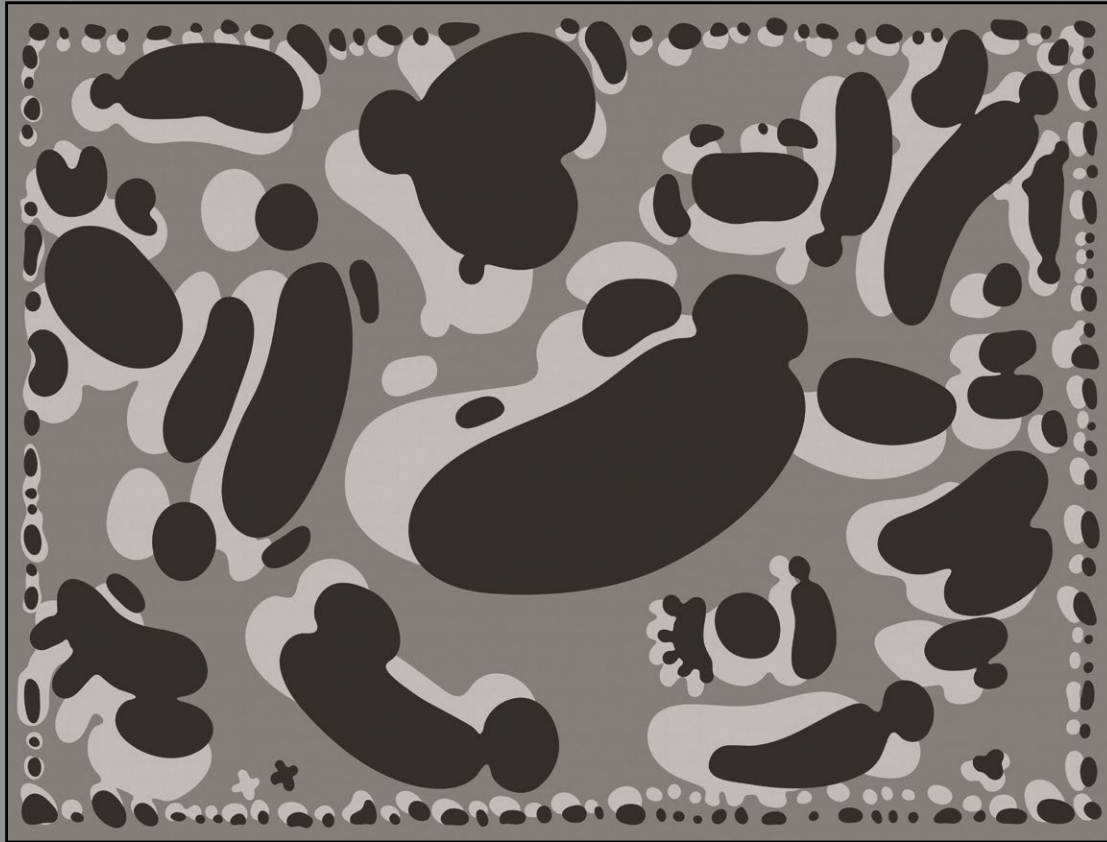
Colour Variations: P209





BE3.01.2 

---



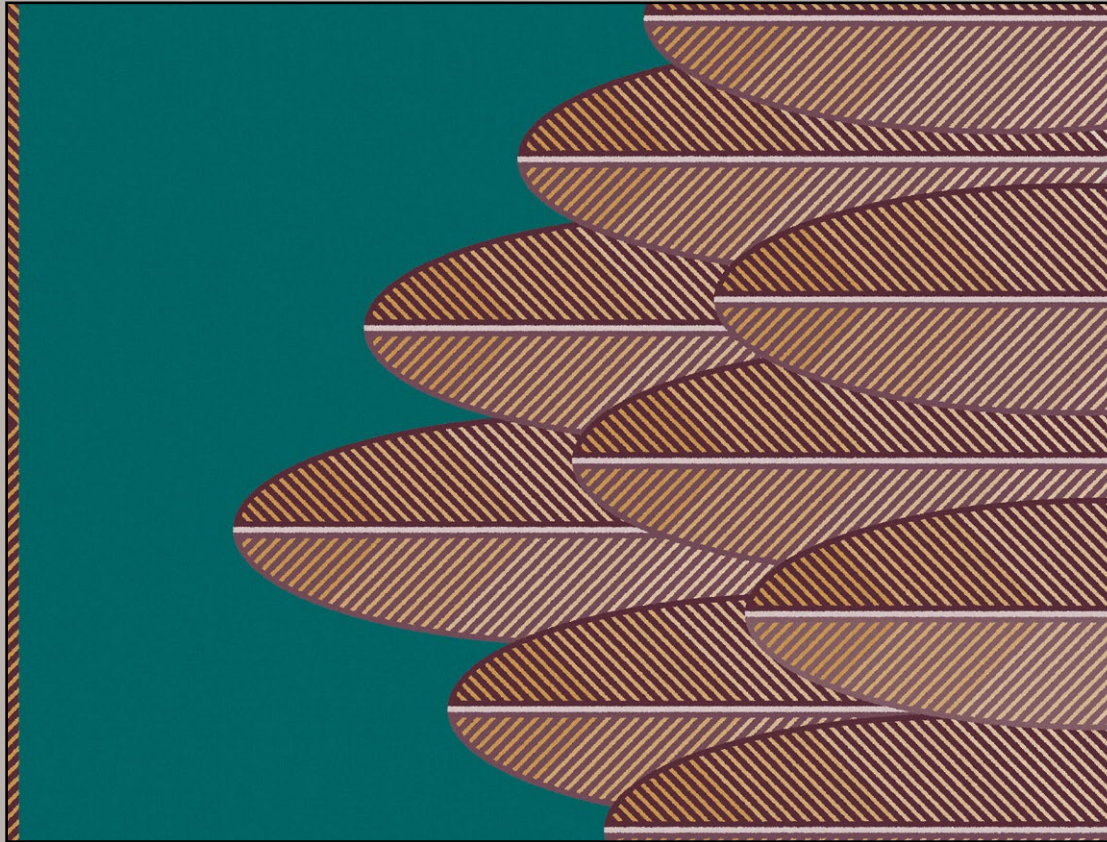
Colour Variations: P210





SK3.01.2 

---



Colour Variations: P210





PL3.01.3 —————



Colour Variations: P210







NA3.01 

---

---

# COLLAGE



Colour Variations: P211





MR3.01 

---



Colour Variations: P211







Colour Variations: P212



EX3.01.2 

---



Colour Variations: P212









Colour Variations: P212







Colour Variations: P212





---

# CRAFT



Colour Variations: P213





EN3.01.1 

---



Colour Variations: P213







PR3.01.1 

---



Colour Variations: P214





CS3.01.1 —————

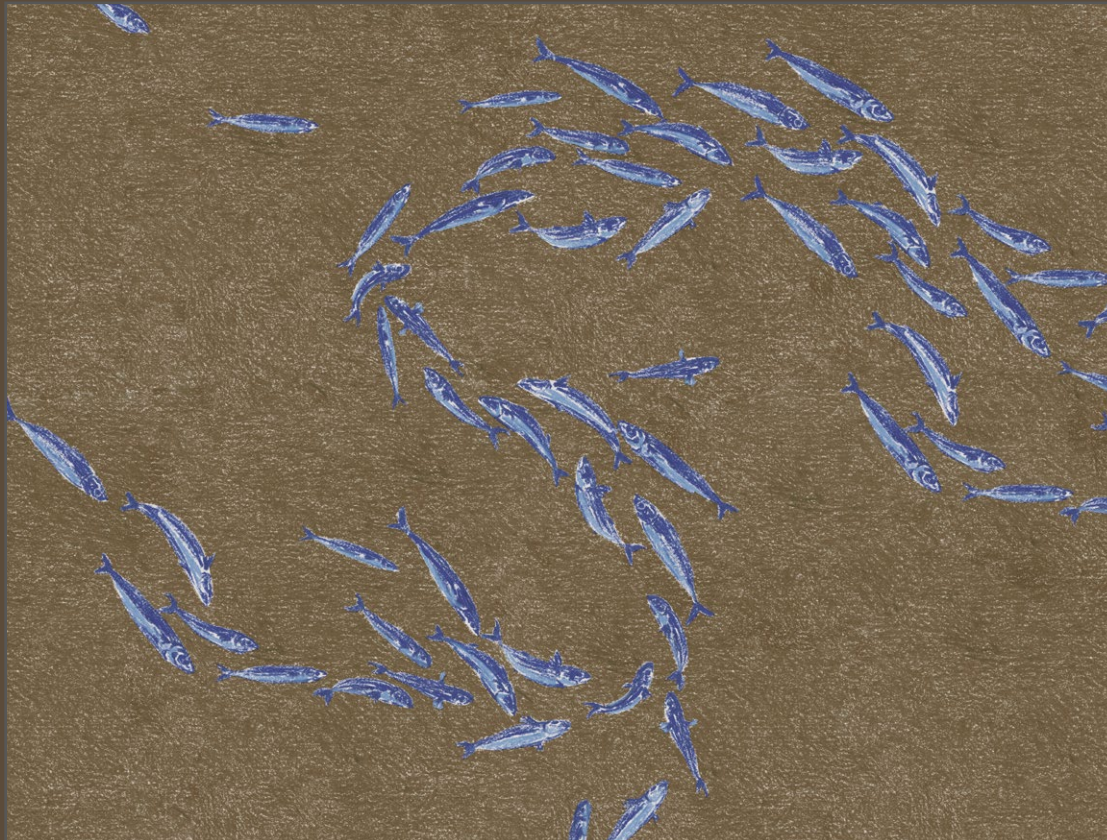


Colour Variations: P214



HN3.01.3 

---



Colour Variations: P215



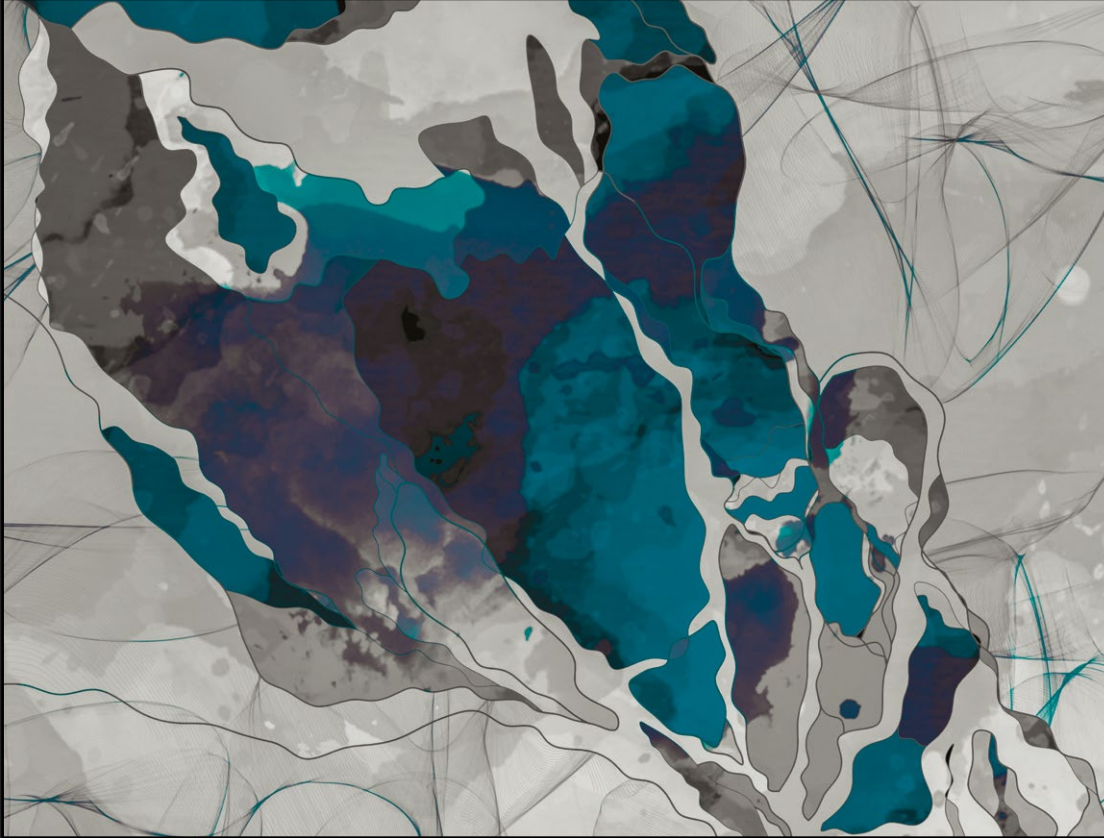


CX3.01.3 

---

---

# SPLASHES



Colour Variations: P215





DT3.07.1 

---



Colour Variations: P215





DT3.05.1 

---



Colour Variations: P216







Colour Variations: P216



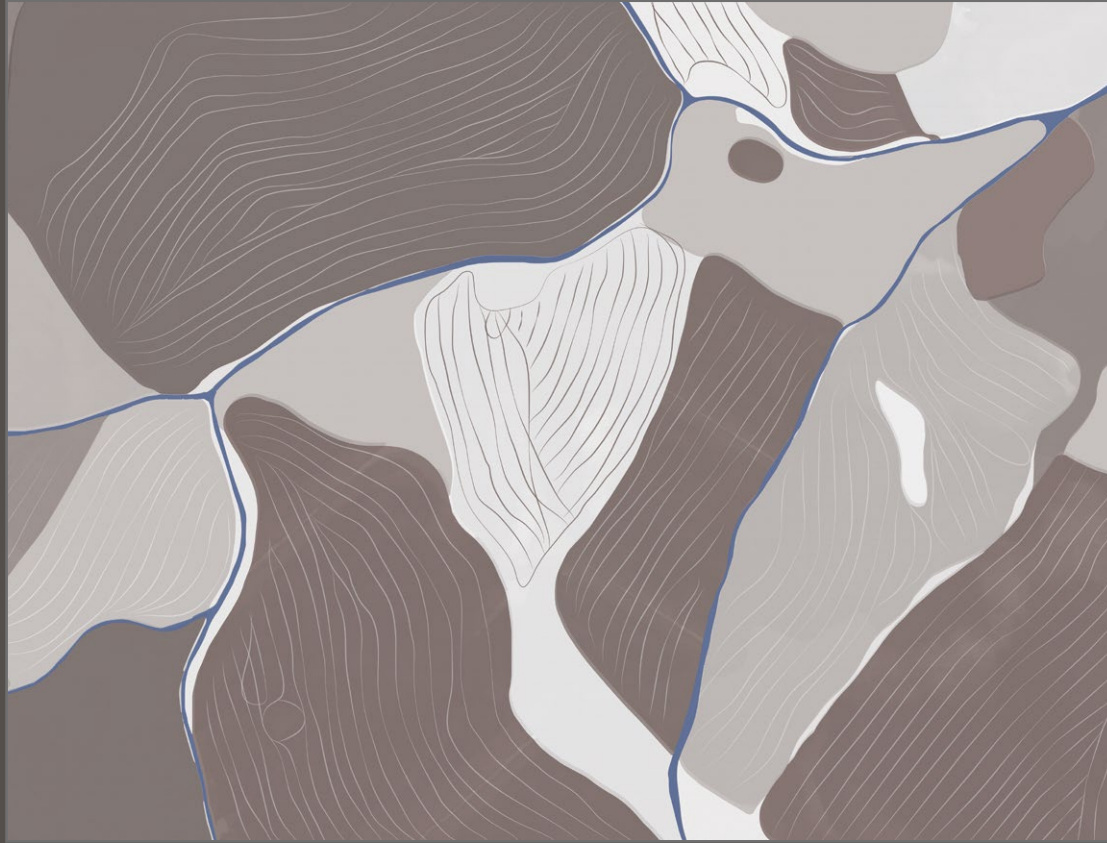


NH3.01.1 

---

---

# SHADES



Colour Variations: P216







BI3.01.3 

---



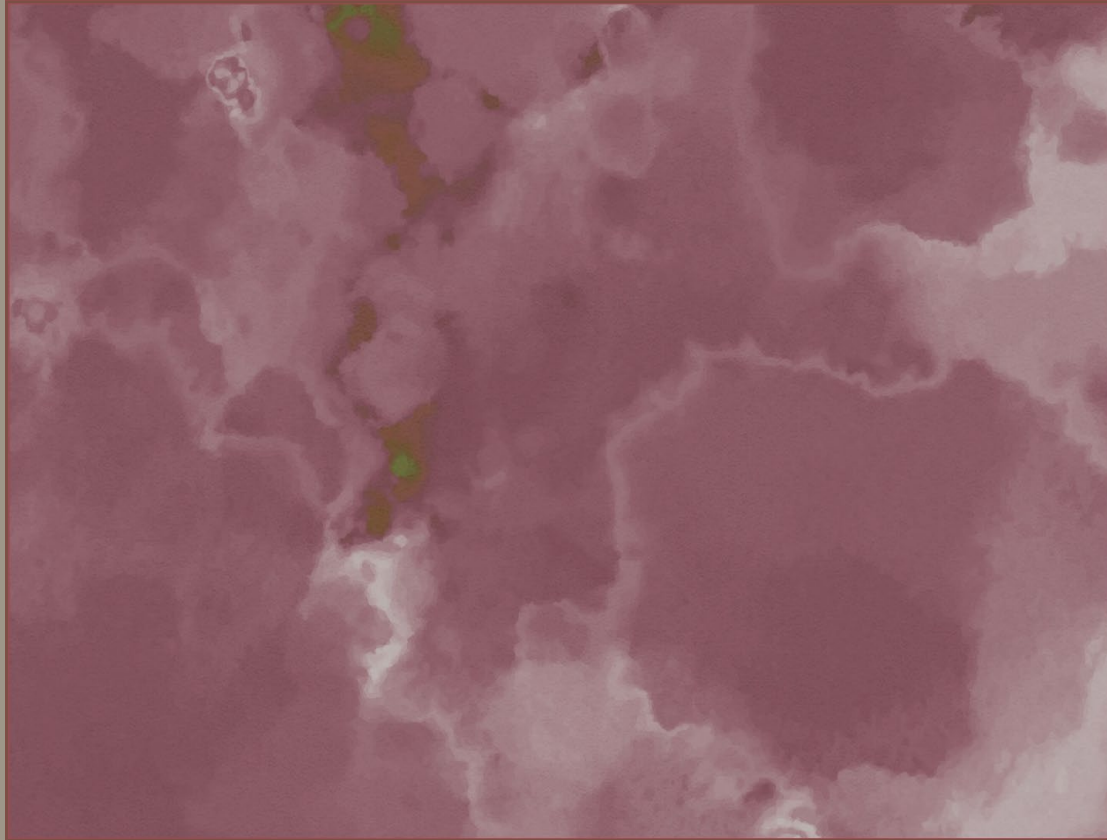
Colour Variations: P217





IS3.01.2 

---



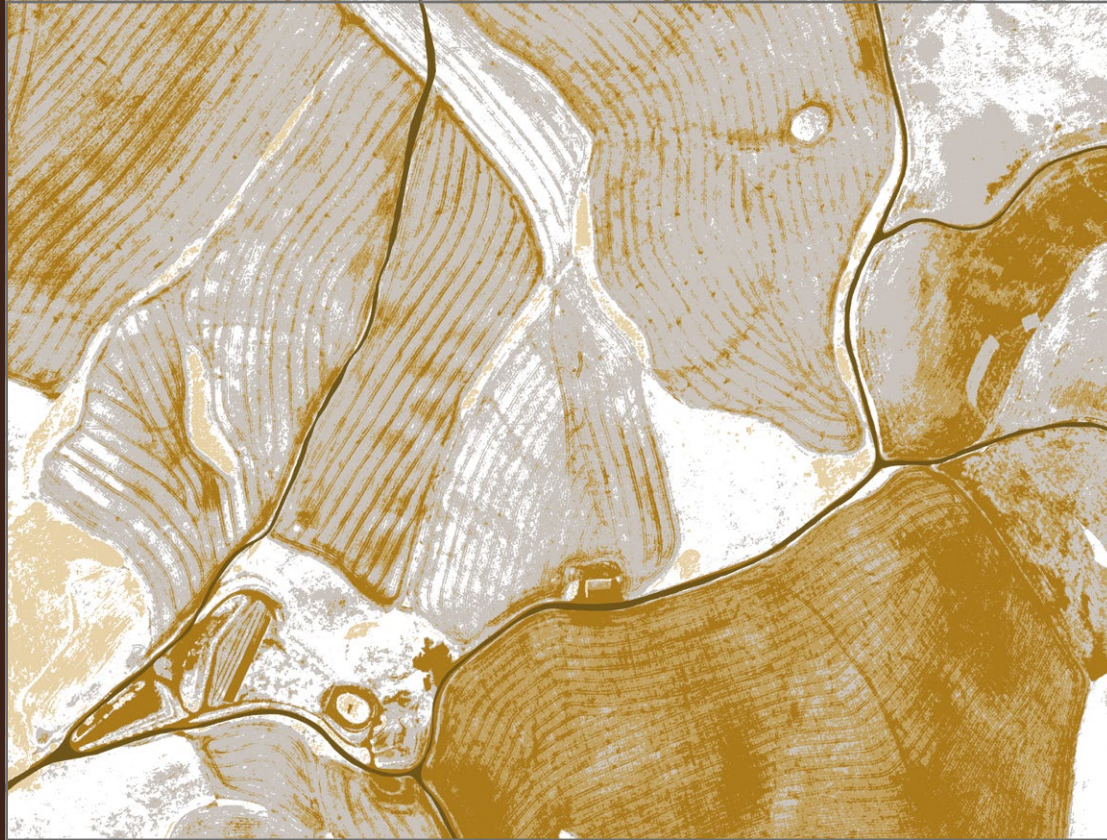
Colour Variations: P217





MT3.01.2 

---



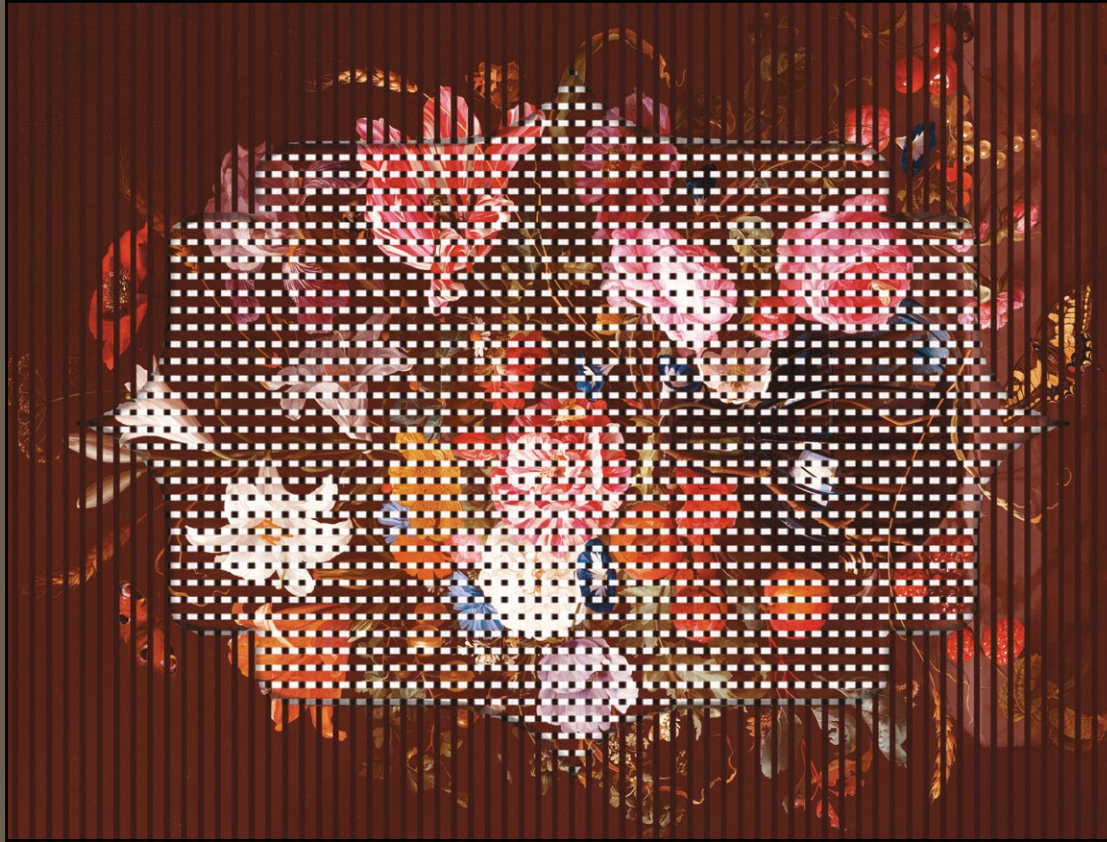
Colour Variations: P218





---

# CONTEMPORARY

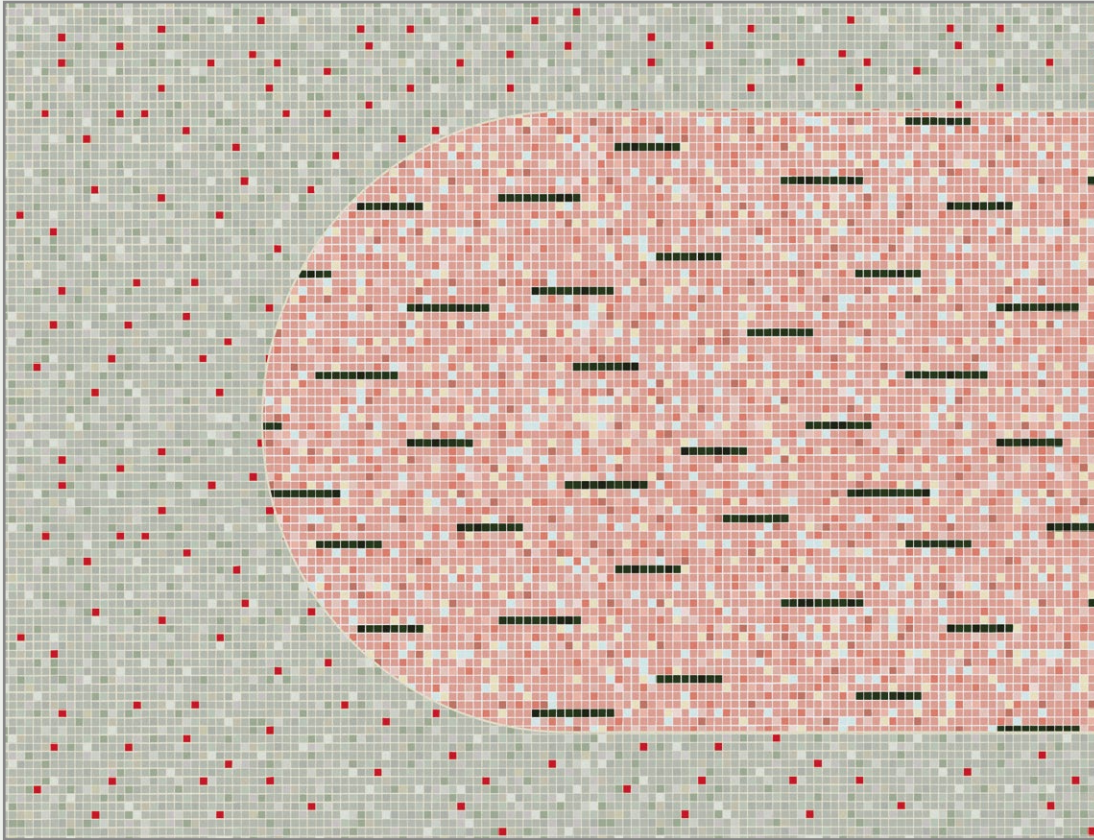


Colour Variations: P218









Colour Variations: P218





MQ3.03.3 

---



Colour Variations: P219



JU3.04.2 

---

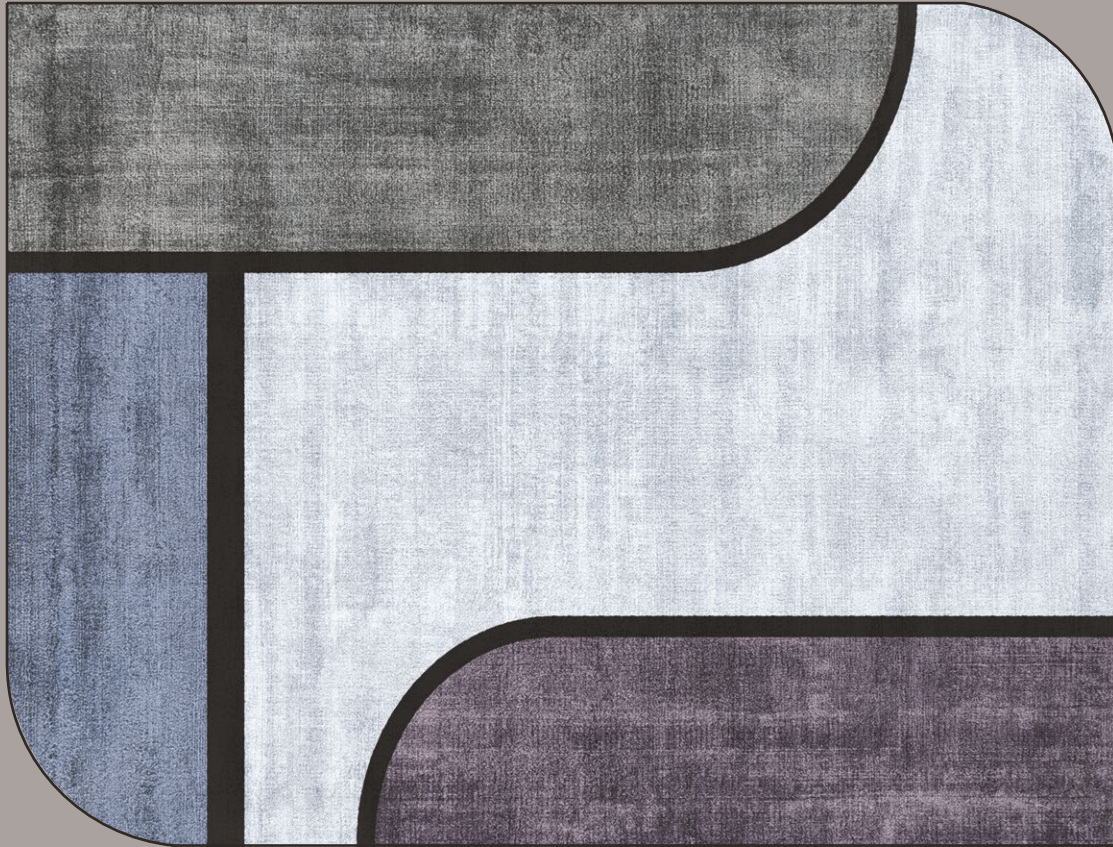


Colour Variations: P219





JU3.01.2 —————



Colour Variations: P219



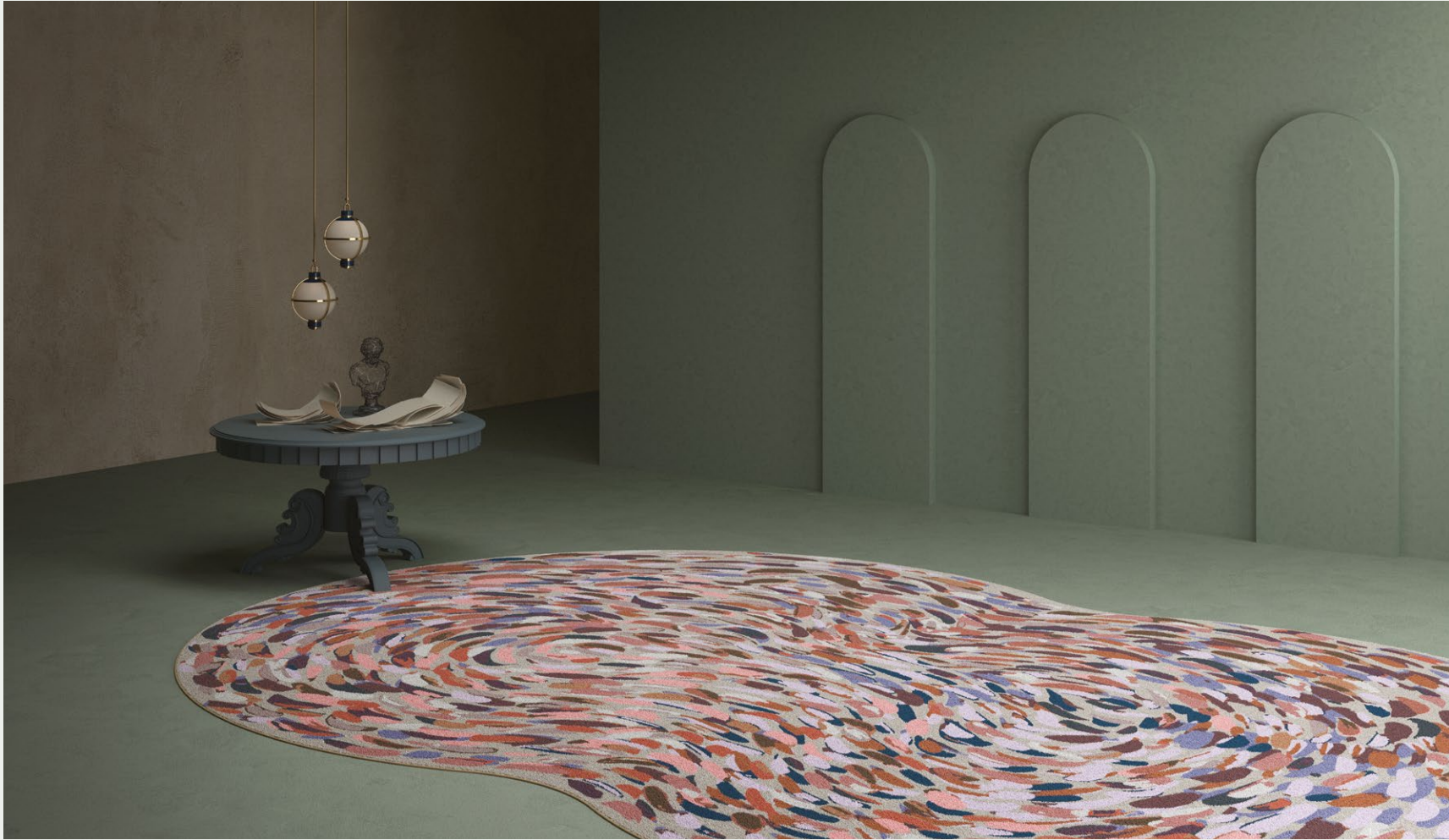




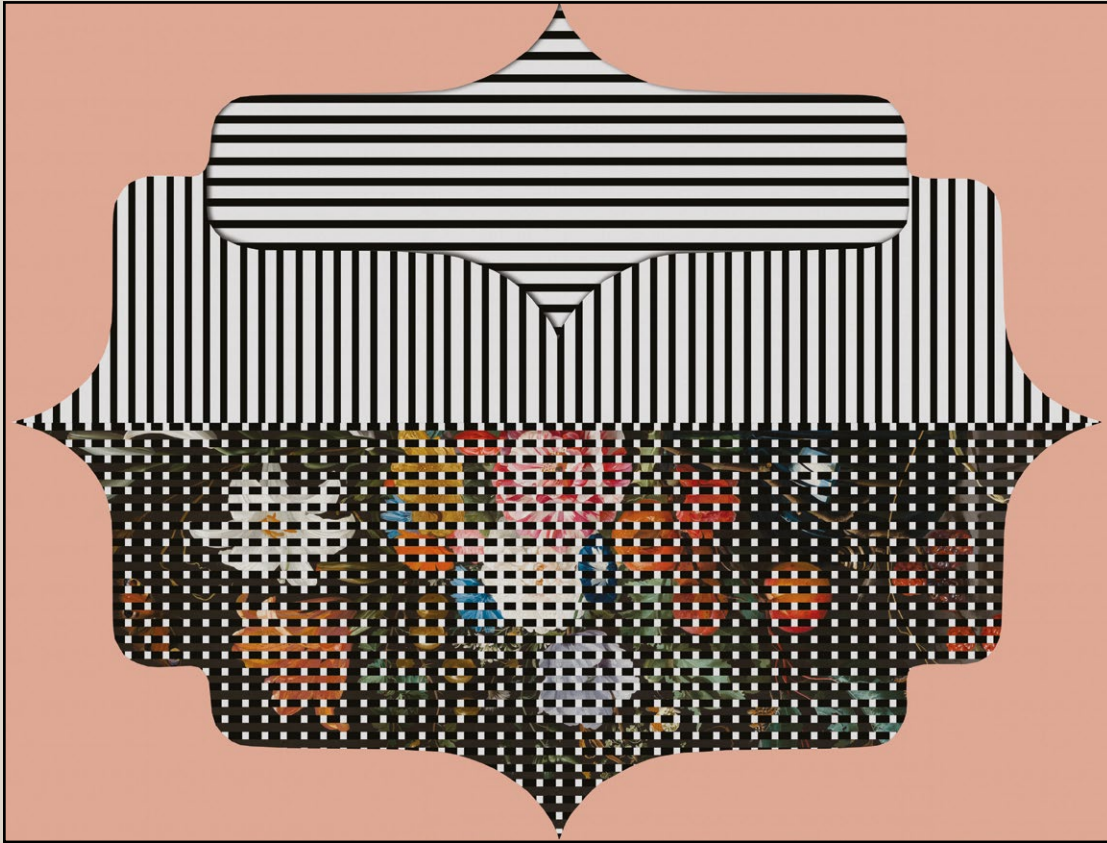


Colour Variations: P219





NE3.01.2 —————



Colour Variations: P220

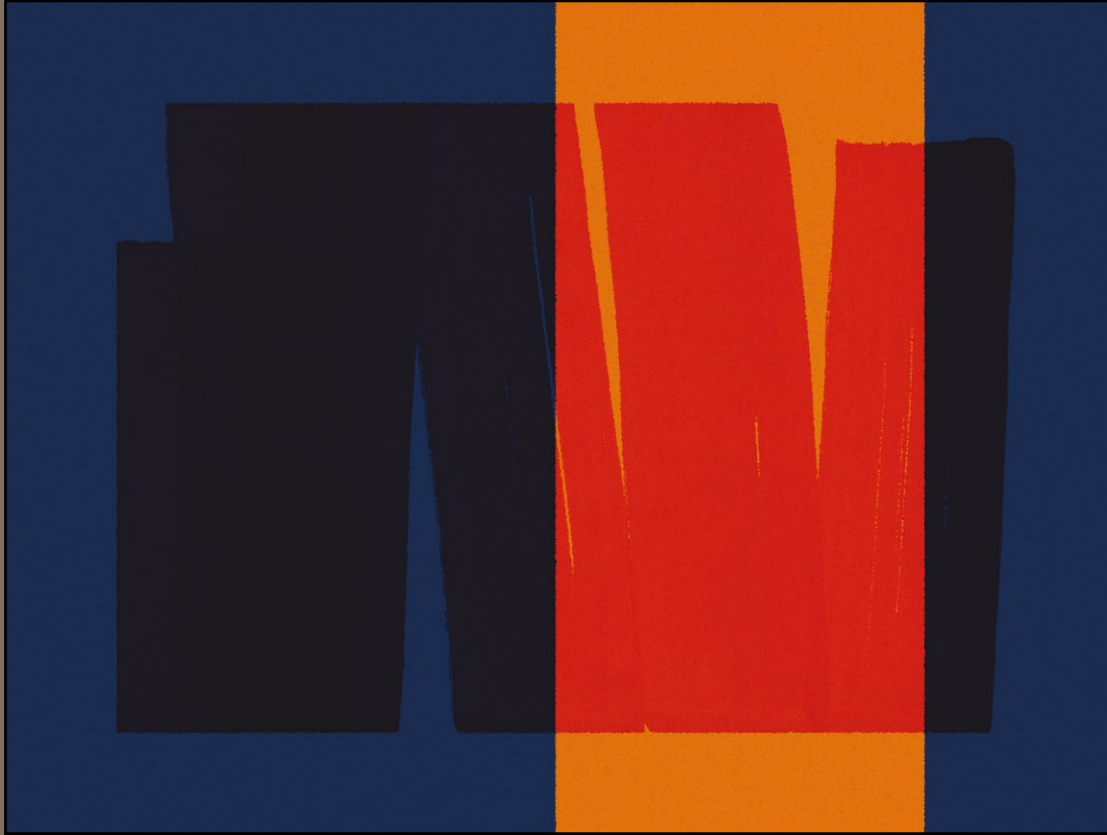




ES3.01.1 —————

---

# LINES



Colour Variations: P220





ZE3.03.3 

---



Colour Variations: P221







TE3.01.3 

---



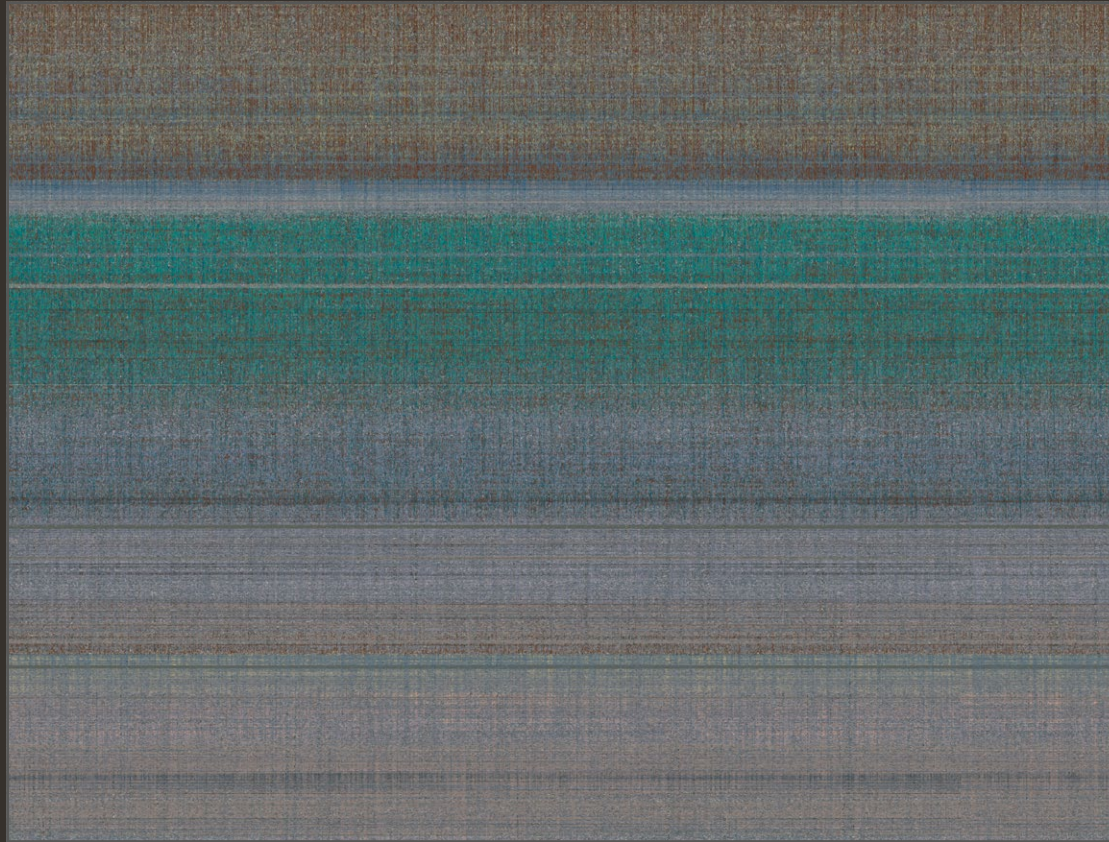
Colour Variations: P221





DF3.01.3 

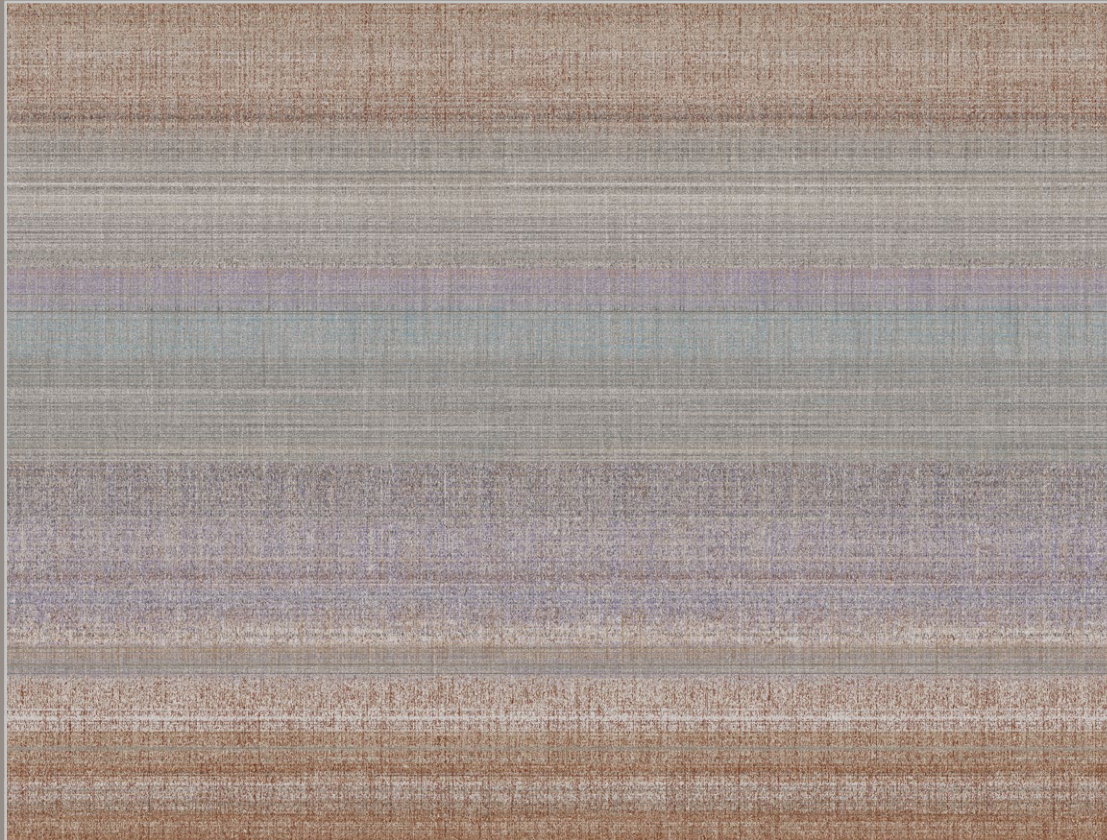
---



Colour Variations: P222







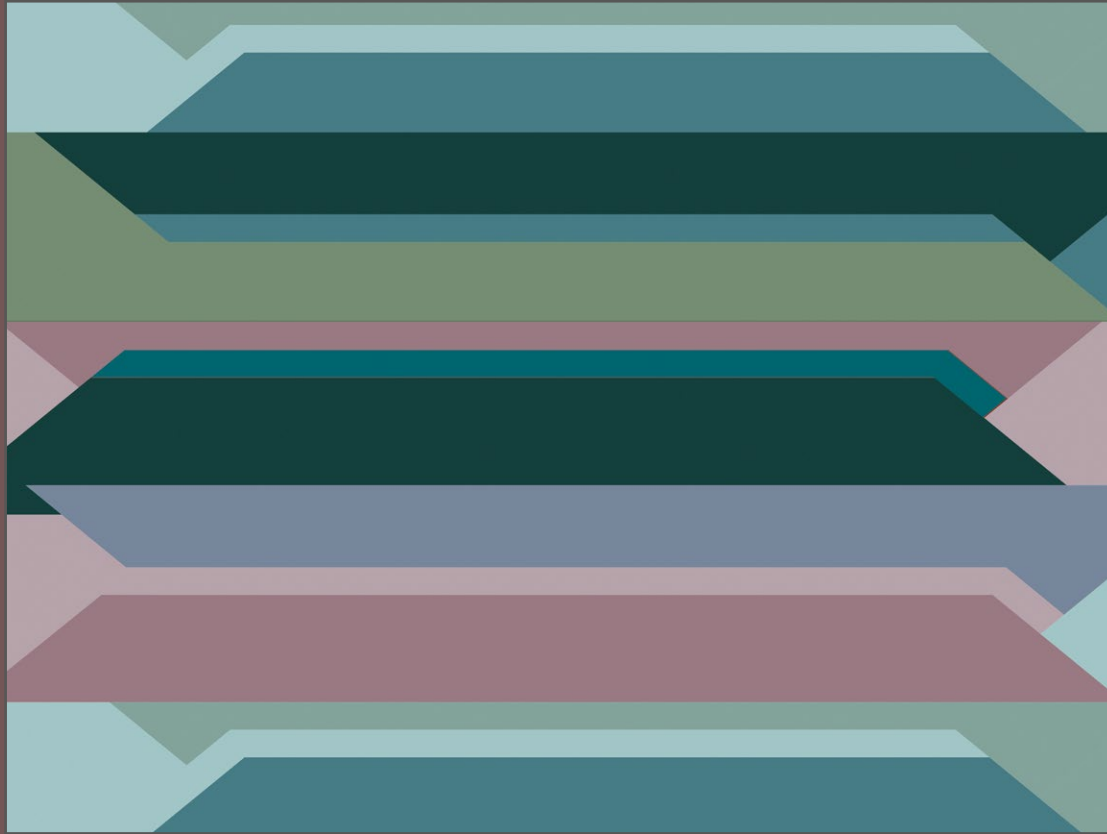
Colour Variations: P222





DF3.03.1 

---



Colour Variations: P222

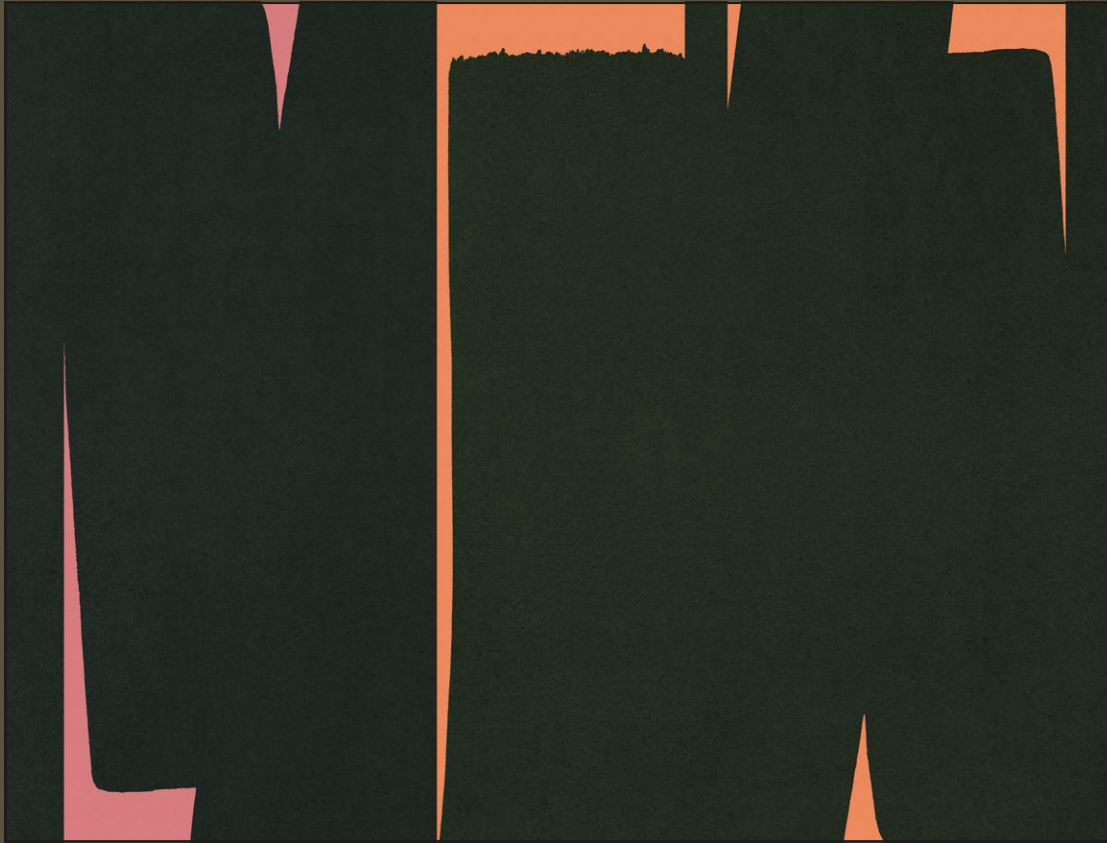






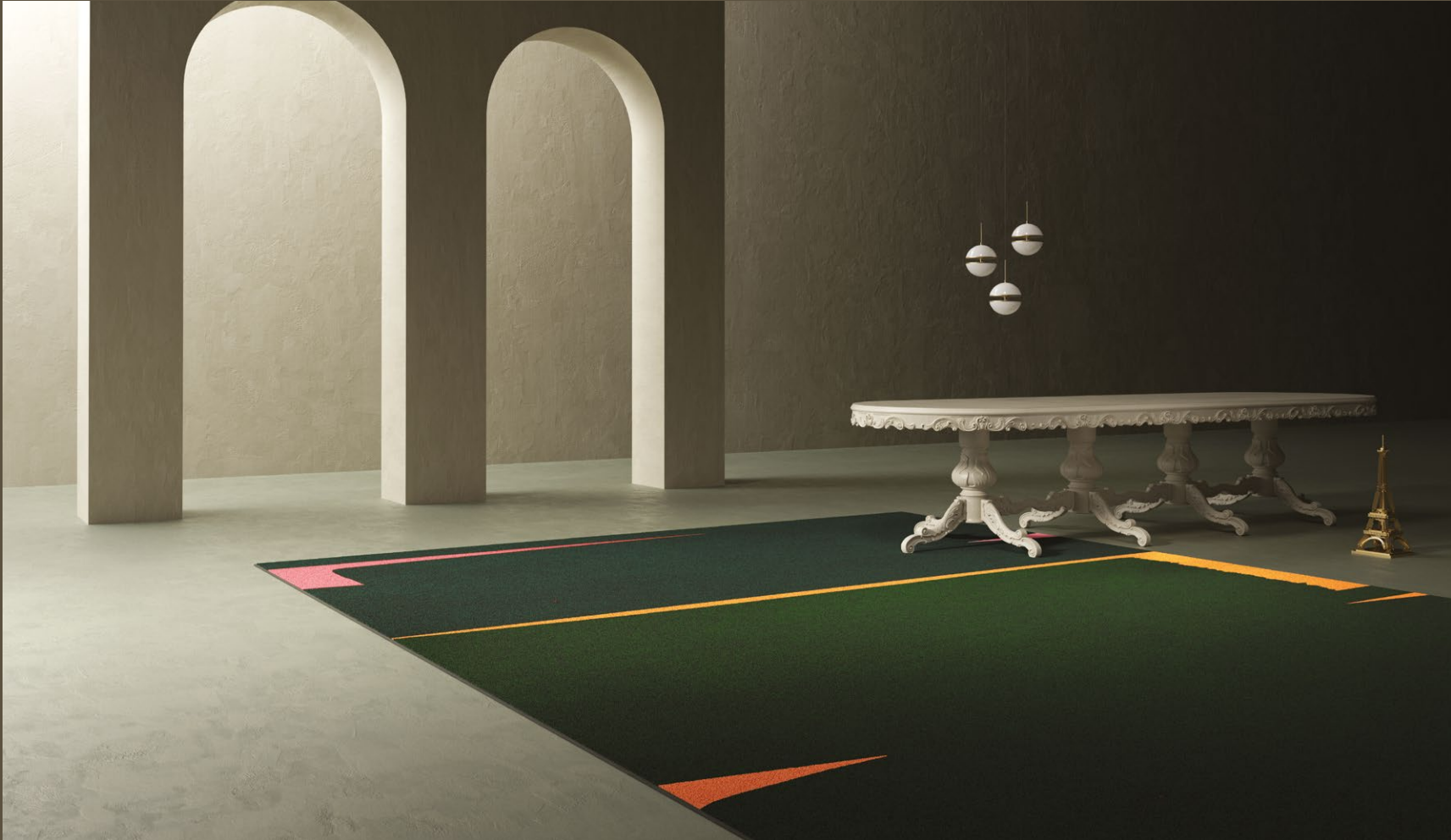
KI3.02.1 

---



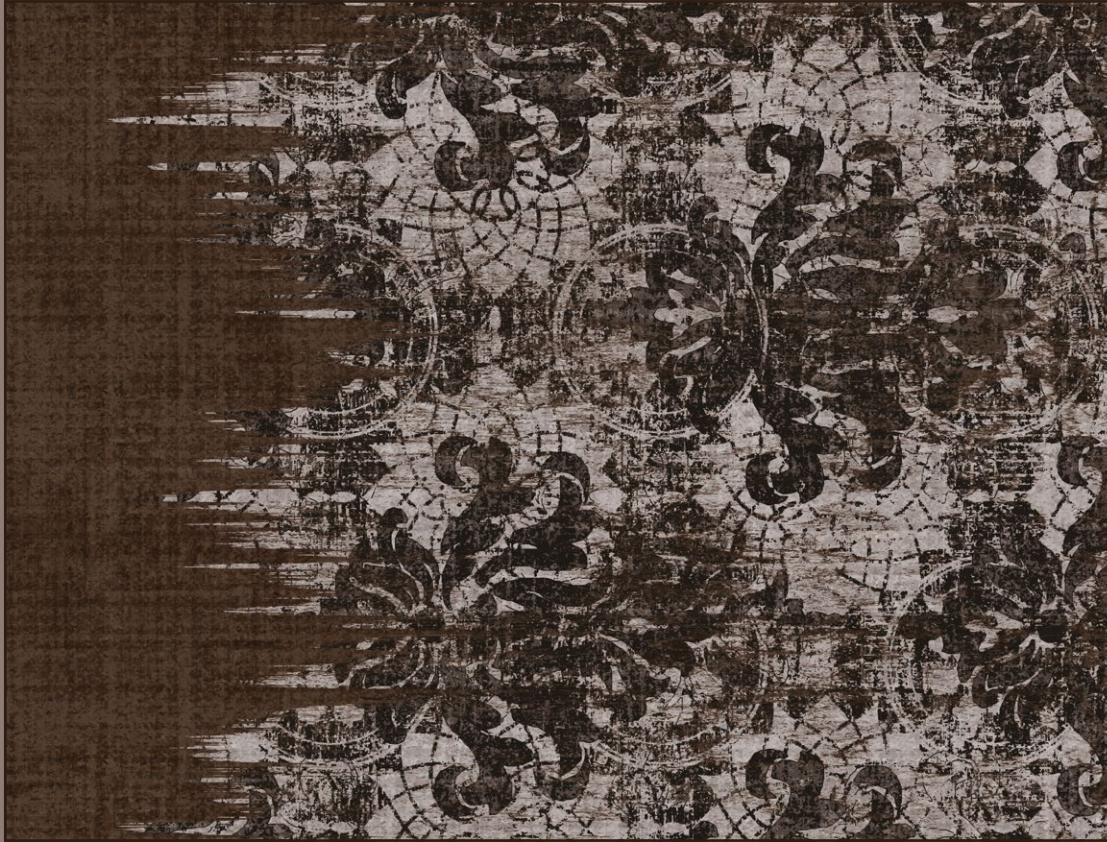
Colour Variations: P223





---

# DECORATIVE



Colour Variations: P223





OC3.01.1 

---



Colour Variations: P223





SL3.01.1 

---



Colour Variations: P224







SL3.08.1 

---



Colour Variations: P224







Colour Variations: P225







Colour Variations: P225





T13.01.1 

---

---

# VIVID



Colour Variations: P225







MR3.03 

---



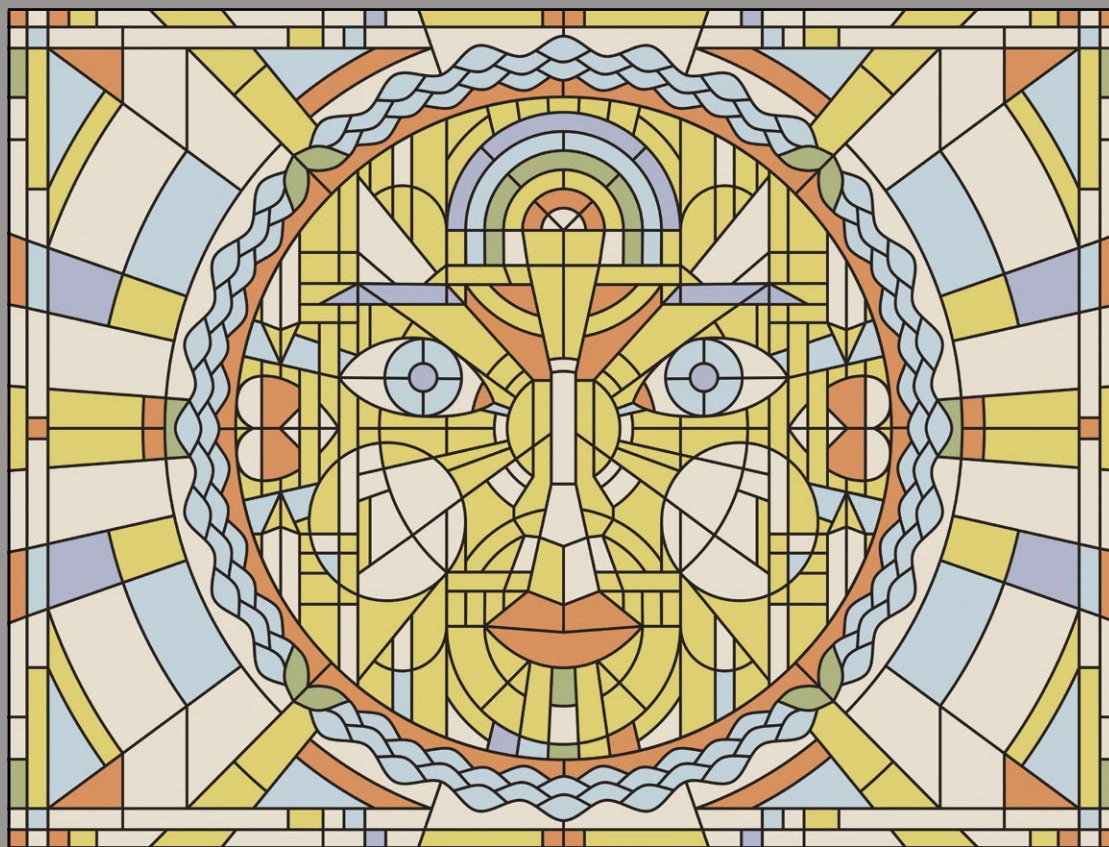
Colour Variations: P226





AW3.02.3 

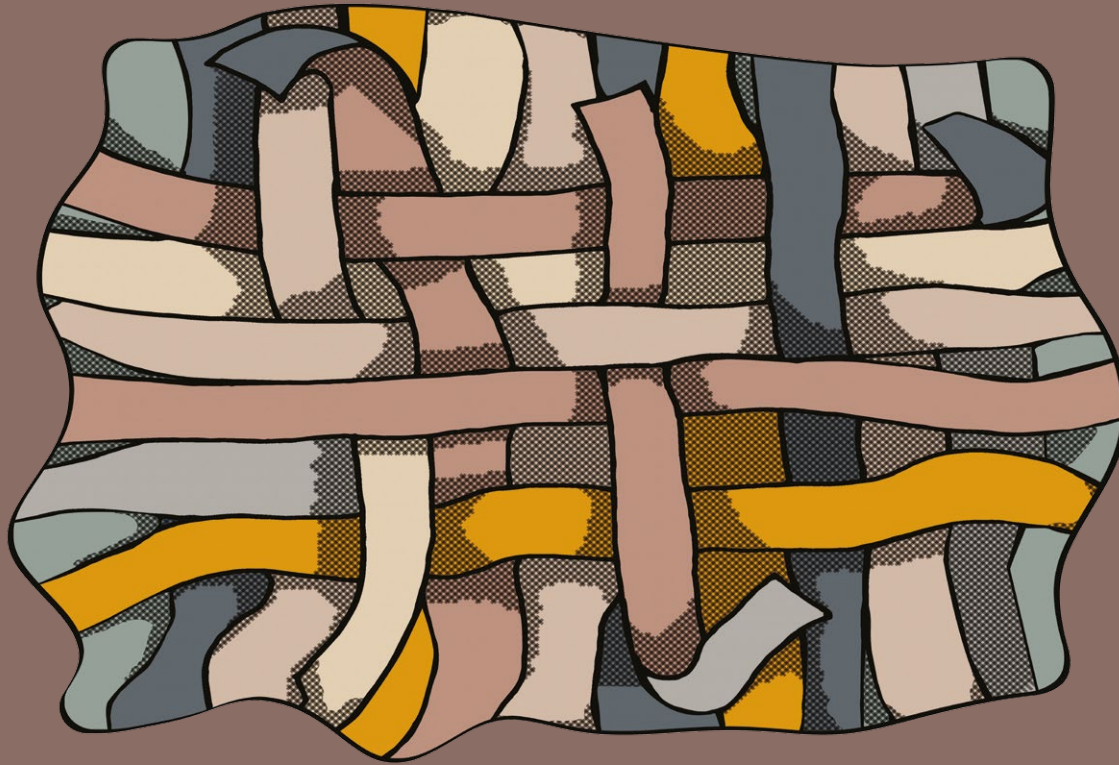
---



Colour Variations: P226







Colour Variations: P226





IT3.01.2 

---



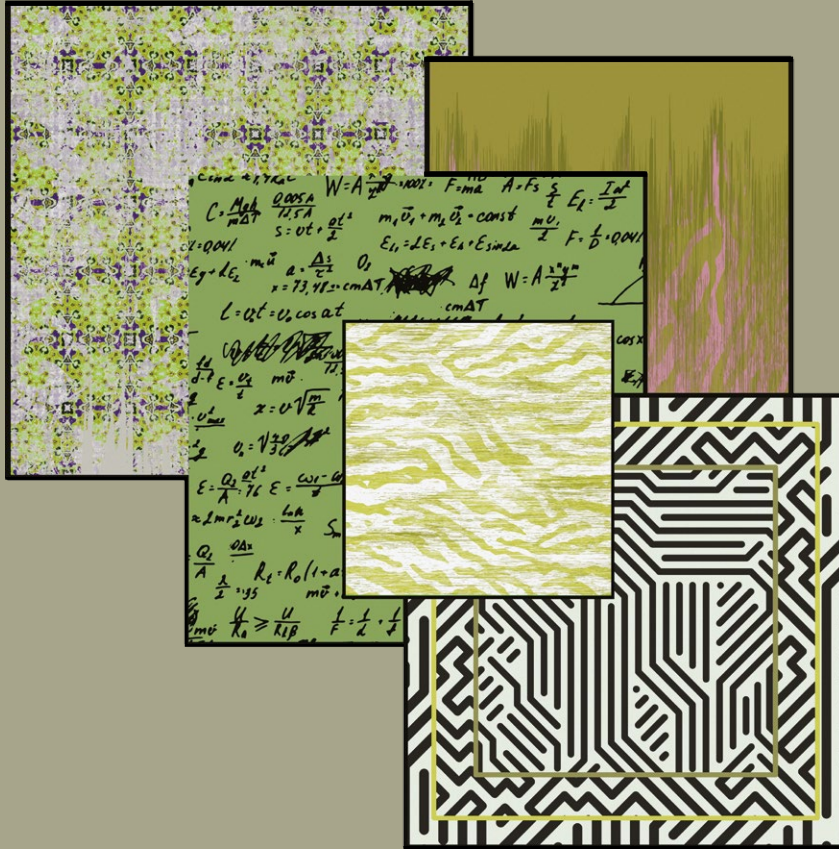
Colour Variations: P226







GO3.02.1 —————



Colour Variations: P227





CP3.07.2



Colour Variations: P227





CP3.01.1 —————



Colour Variations: P227



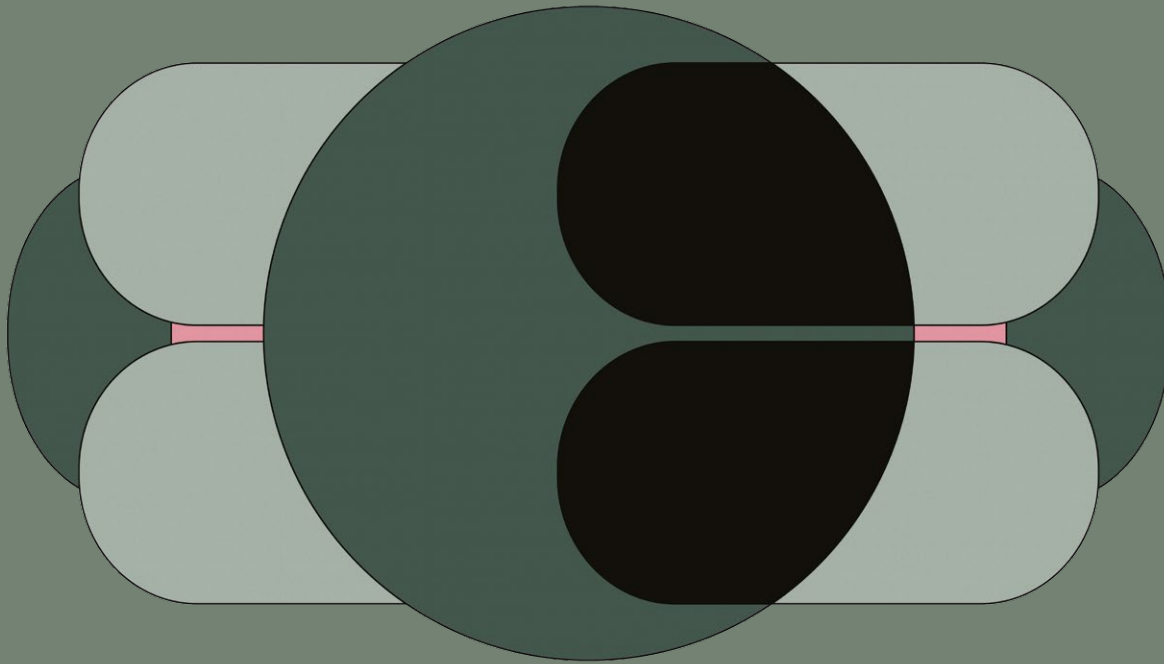


FO3.01.1 

---

---

# GEOMETRIC

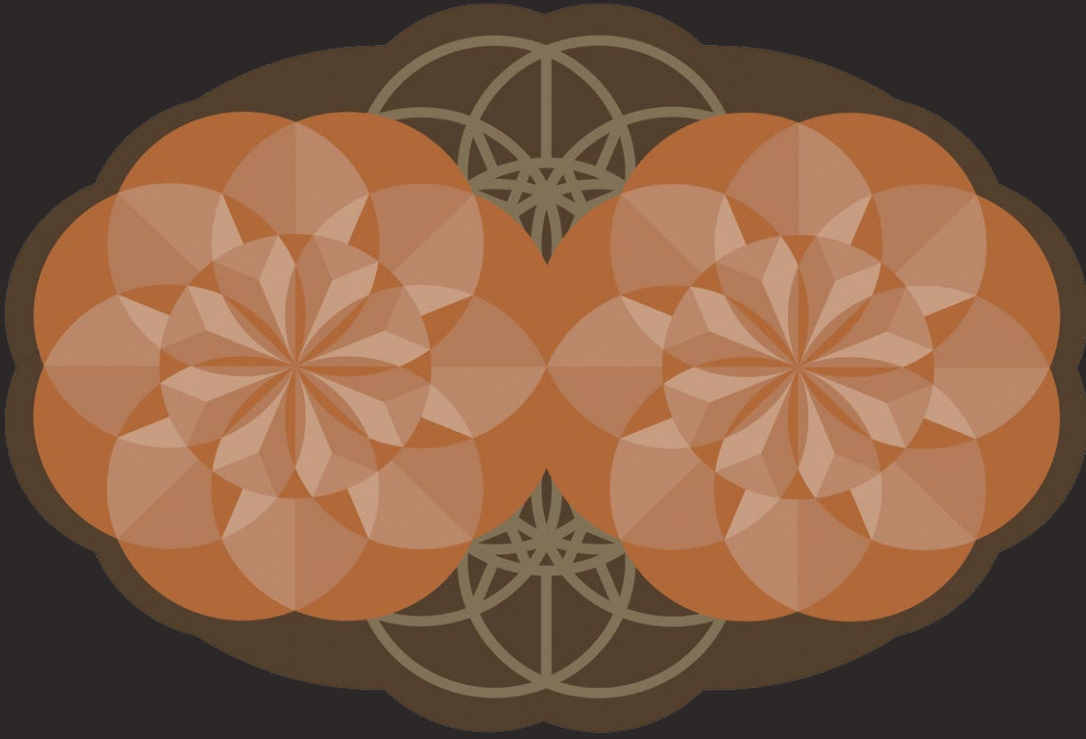


Colour Variations: P228









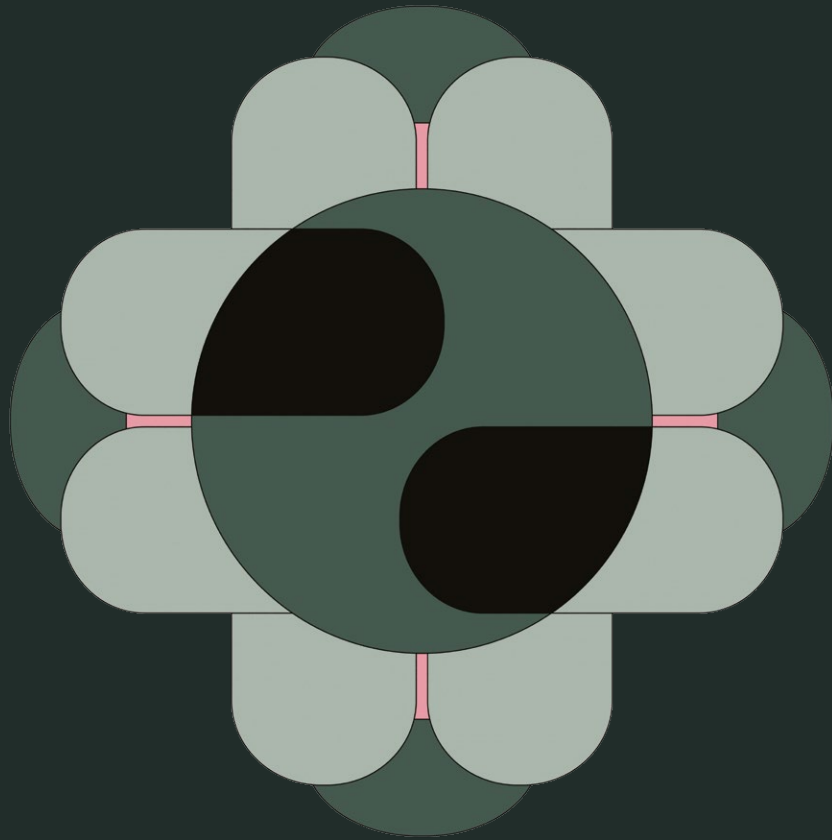
Colour Variations: P228





AN3.01.1 

---



Colour Variations: P228



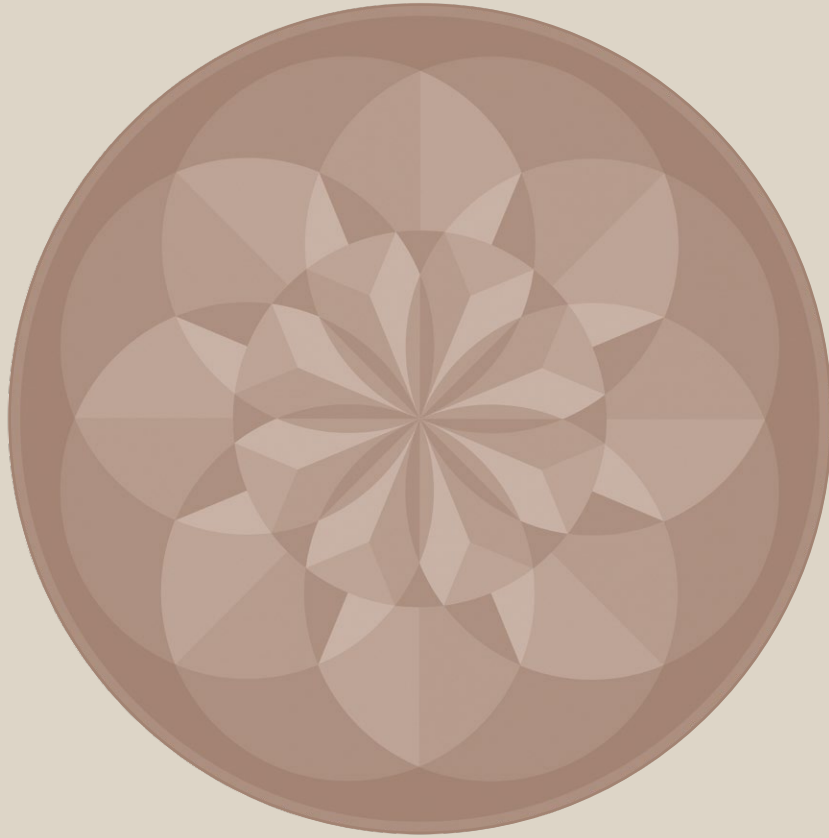




Colour Variations: P229







Colour Variations: P229







SA3.01.1 —————

---

## TECHNICAL SPECIFICATIONS

Product colours which are represented in this catalogue are indicative, actual colours may vary on different materials provided. It may occur some slight tone discrepancies between one production lot and another one.

Identification	Standard
Manufacturing process	DIN ISO 2424
Frontside structure	DIN ISO 2424
Color	DIN ISO 2424
Pile material	
Primary backing	DIN ISO 2424
Secondary backing	DIN ISO 2424
Pile weight	DIN ISO 2424
Total weight	ISO 8543
Pile height	ISO 1766
Total thickness	ISO 1765
Number of knots	ISO 1763
Width	DIN 3018
Wear classification	EN 1307:2019
Comfort rating	EN 1307:2019
Castor chair resistance	EN 985
Fire rating	DIN EN 13501-1
Colour fastness to light	EN ISO 105-B02:2013
Colour fastness to water	DIN EN ISO 105 E01:2013
Rubbering fastness dry/wet	DIN EN ISO 105 X12:2002

\* Glued on massive mineral concrete



ZEST FELT  
FOLLY SOFT

Please visit [www.yo2.io](http://www.yo2.io) to see the full collection and updated technical information in detail.

## AREA RUGS

Zest Felt	Folly Soft	Volume Furry
Tufted 1/10''	Tufted 1/10''	Tufted 1/10''
Cut pile / Saxony	Cut pile / Saxony	Cut pile / Saxony
Chromojet Print	Chromojet Print	Chromojet Print
100% Polyamide PA 6	100% Polyamide PA 6.6	100% Polyamide PA 6.6
PES Woven	PES Woven	PP Woven
Felt Back	Felt Back	Felt Back
+/- 1050 g/m <sup>2</sup>	+/- 1150 g/m <sup>2</sup>	+/- 1600 g/m <sup>2</sup>
+/- 2722 g/m <sup>2</sup>	+/- 2782 g/m <sup>2</sup>	+/- 3085 g/m <sup>2</sup>
+/- 5,5 mm	+/- 8,0 mm	+/- 9 mm
+/- 9,7 mm	+/- 10,7 mm	+/- 10,3 mm
+/- 213000 /m <sup>2</sup>	+/- 169000 /m <sup>2</sup>	+/- 194775 /m <sup>2</sup>
+/- 400 cm	+/- 400 cm	+/- 400 cm
23/33	23/32	23/31
LC 4	LC 5	LC 5
Class A	Class A	Class A
B <sub>fl</sub> -s1*	B <sub>fl</sub> -s1*	B <sub>fl</sub> -s1*
6-7	6-7	6-7
5	5	5
5/5	5/5	5/5



EN 14041: 2004

EN 14041: 2004

EN 14041: 2004

Identification	Standard
Manufacturing process	DIN ISO 2424
Frontside structure	DIN ISO 2424
Color	DIN ISO 2424
Pile material	
Primary backing	DIN ISO 2424
Secondary backing	DIN ISO 2424
Pile weight	DIN ISO 2424
Total weight	ISO 8543
Pile height	ISO 1766
Total thickness	ISO 1765
Number of knots	ISO 1763
Width	DIN 3018
Wear classification	EN 1307:2019
Comfort rating	EN 1307:2019
Castor chair resistance	EN 985
Fire rating	DIN EN 13501-1
Colour fastness to light	EN ISO 105-B02:2013
Colour fastness to water	DIN EN ISO 105 E01:2013
Rubbing fastness dry/wet	DIN EN ISO 105 X12:2002

\* Glued on massive mineral concrete



MASS CUSHY  
EASY BLISS

Please visit [www.yo2.io](http://www.yo2.io) to see the full collection and updated technical information in detail.

## BROADLOOM

Mass Cushy	Easy Bliss
Tufted 1/10''	Tufted 1/10''
Cut pile / Saxony	Cut pile / Saxony
Chromojet Print	Chromojet Print
100% Polyamide PA 6	100% Polyamide PA 6.6
PES Woven	PES Woven
Action Back	Action Back
+/- 1050 g/m <sup>2</sup>	+/- 1150 g/m <sup>2</sup>
+/- 2222 g/m <sup>2</sup>	+/- 2282 g/m <sup>2</sup>
+/- 5,5 mm	+/- 8,0 mm
+/- 6,8 mm	+/- 9,2 mm
+/- 213000 /m <sup>2</sup>	+/- 169000 /m <sup>2</sup>
+/- 400 cm	+/- 400 cm
23/32	23/31
LC3	LC 4
Class A	Class A
C <sub>fl</sub> - s1*	B <sub>fl</sub> - s1*
6-7	6-7
5	5
5/5	5/5



EN 14041: 2004



EN 14041: 2004



[www.yo2.io](http://www.yo2.io)